

SNCA Monoclonal Antibody

Catalog No. E-AB-27633

Note: Centrifuge before opening to ensure complete recovery of vial contents.

Description

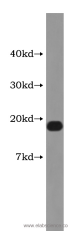
Reactivity	Human,Mouse,Rat
Immunogen	Fusion protein of a-Synuclein
Host	Mouse
Isotype	IgG2a
Clone	Clone:1B10E9
Purification	Protein A purification
Conjugation	Unconjugated
Buffer	PBS with 0.02% sodium azide, 50% glycerol, PH7.3

Applications

Recommended Dilution

WB 1:500-1:2000

Data



Western Blot analysis of Mouse brain tissue using SNCA Monoclonal Antibody at dilution of 1:1000

Observed Mw:18-19kDa

Calculated Mw:14kDa

Preparation & Storage

Storage Store at -20°C. Avoid freeze / thaw cycles.

Background

alpha-synuclein (α -syn) is a 14-19 kDa phosphoprotein that is primarily localized to the presynaptic terminals of mature neurons, where it is involved in synaptic function and plasticity. α -syn has drawn intense interest ever since the late 1990s, when the first α -synuclein missense mutation was identified as a cause of familial Parkinson's disease (PD). Aggregated and hyper-phosphorylated forms of α -syn protein are the pathological hallmark of Lewy body disease, which includes Parkinson's disease (PD), diffuse Lewy body disease (DLBD), and Lewy body variant of Alzheimer's disease (LBV). This antibody can recognize all the isoforms of α -syn.

For Research Use Only