

Cyclin D3 Monoclonal Antibody

Catalog No. E-AB-27671

Note: Centrifuge before opening to ensure complete recovery of vial contents.

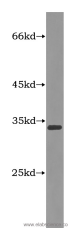
Description

Reactivity	Human
Immunogen	Fusion Protein of Cyclin D3
Host	Mouse
Isotype	IgG1
Clone	Clone:1F2C6
Purification	Protein G purification
Conjugation	Unconjugated
Buffer	PBS with 0.02% sodium azide, 50% glycerol, PH7.3

Applications Recommended Dilution

WB 1:1000-1:10000,
IHC 1:50-1:500

Data



Western Blot analysis of Raji cells using Cyclin D3
Monoclonal Antibody at dilution of 1:4000
Observed Mw:33-35kDa
Calculated Mw:33kDa

Preparation & Storage

Storage Store at -20°C. Avoid freeze / thaw cycles.

Background

Cyclin D3 belongs to the highly conserved cyclin family, whose members are characterized by a dramatic periodicity in protein abundance through the cell cycle. Cyclins function as regulators of CDK kinases. Different cyclins exhibit distinct expression and degradation patterns which contribute to the temporal coordination of each mitotic event. This cyclin forms a complex with and functions as a regulatory subunit of CDK4 or CDK6, whose activity is required for cell cycle G1/S transition. This protein has been shown to interact with and be involved in the phosphorylation of tumor suppressor protein Rb. The CDK4 activity associated with this cyclin was reported to be necessary for cell cycle progression through G2 phase into mitosis after UV radiation.

For Research Use Only