

## ZO-1 Monoclonal Antibody

**Catalog No.** E-AB-27827

*Note:* Centrifuge before opening to ensure complete recovery of vial contents.

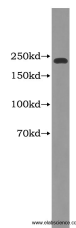
### Description

<b>Reactivity</b>	Human, Mouse
<b>Immunogen</b>	Fusion protein of ZO-1
<b>Host</b>	Mouse
<b>Isotype</b>	IgG1
<b>Clone</b>	Clone:1G4A1
<b>Purification</b>	Protein G purification
<b>Conjugation</b>	Unconjugated
<b>Buffer</b>	PBS with 0.02% sodium azide, 50% glycerol, PH7.3

### Applications Recommended Dilution

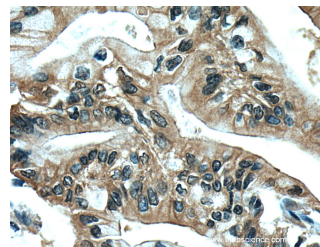
**WB 1:1000-1:4000,**  
**IHC 1:200-1:800, IF**  
**1:50-1:200**

### Data

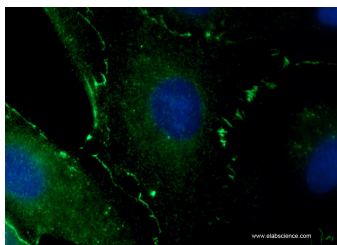


Western Blot analysis of HepG2 cells using ZO-1 Monoclonal Antibody at dilution of 1:2000.

**Observed Mw:230kDa**  
**Calculated Mw:1748aa,195kDa**



Immunohistochemistry of paraffin-embedded human pancreas cancer tissue slide using ZO-1 Monoclonal Antibody at dilution of 1:200 (under 40x lens).



Immunofluorescent analysis of (4% PFA) fixed MDCK cells using ZO-1 Monoclonal Antibody at dilution of 1:100 and Alexa Fluor 488-conjugated AffiniPure Goat Anti-Mouse IgG(H+L).

### For Research Use Only

## Preparation & Storage

**Storage**                      Store at -20°C. Avoid freeze / thaw cycles.

## Background

Tight junction (or zonula occludens) form the continuous intercellular barrier between epithelial and endothelial cells, which is required to separate tissue spaces and regulate selective movement of solutes across the epithelium and endothelium. ZO-1 (also known as TJP1) is a peripheral membrane phosphoprotein located on the cytoplasmic face and is expressed in tight junctions of both epithelial and endothelial cells. It binds the transmembrane proteins occludin and the claudins linking them to cytoskeletal actin. ZO-1 belongs to a family of multidomain proteins known as the membrane-associated guanylate kinase homologs (MAGUKs). It is a pivotal tight junction protein and may be involved in signalling mechanisms regulating cell proliferation and differentiation.

---

## For Research Use Only