

CD2 Monoclonal Antibody

Catalog Number:E-AB-22097



Note: Centrifuge before opening to ensure complete recovery of vial contents.

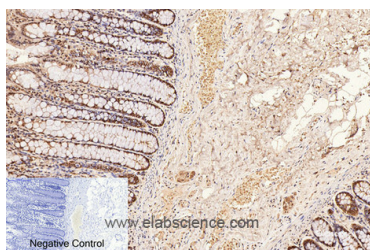
Description

Reactivity	Human,Mouse,Rat
Immunogen	Synthetic Peptide
Host	Mouse
Isotype	IgG
Clone	Clone:4C3
Purification	Protein A purification
Conjugation	Unconjugated
Formulation	PBS with 0.02% sodium azide and 50% glycerol pH 7.4.

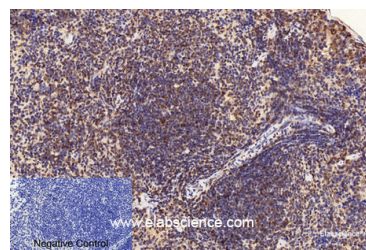
Applications Recommended Dilution

IHC	1:50-200
------------	----------

Data



Immunohistochemistry of paraffin-embedded Human colon tissue using CD2 Monoclonal Antibody at dilution of 1:200.



Immunohistochemistry of paraffin-embedded Mouse spleen tissue using CD2 Monoclonal Antibody at dilution of 1:200.

Preparation & Storage

Storage Store at -20°C. Avoid freeze / thaw cycles.

Background

The protein encoded by this gene is a surface antigen found on all peripheral blood T-cells. The encoded protein interacts with LFA3 (CD58) on antigen presenting cells to optimize immune recognition. A locus control region (LCR) has been found in the 3' flanking sequence of this gene. CD2 (CD2 Molecule) is a Protein Coding gene. Diseases associated with CD2 include Penis Squamous Cell Carcinoma and Immune Defect Due To Absence Of Thymus. Among its related pathways are PEDF Induced Signaling and TGF-Beta Pathway. GO annotations related to this gene include protein homodimerization activity and receptor activity.

For Research Use Only

A Reliable Research Partner in Life Science and Medicine

Toll-free: 1-888-852-8623

Web: www.elabscience.com

Tel: 1-832-243-6086

Email: techsupport@elabscience.com

Fax: 1-832-243-6017