

IL2RA Monoclonal Antibody

Catalog No. E-AB-22102

Note: Centrifuge before opening to ensure complete recovery of vial contents.

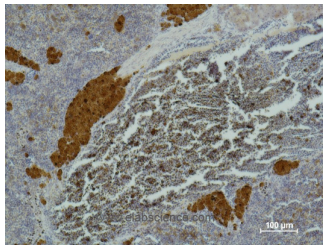
Description

| | |
|---------------------|--|
| Reactivity | Human |
| Immunogen | Synthetic Peptide |
| Host | Mouse |
| Isotype | IgG |
| Purification | Protein A purification |
| Conjugation | Unconjugated |
| Buffer | PBS with 0.02% sodium azide and 50% glycerol pH 7.4. |

Applications Recommended Dilution

| | |
|------------|-----------|
| IHC | 1:200-500 |
|------------|-----------|

Data



Immunohistochemistry of paraffin-embedded Mouse spleen tissue using IL2RA Monoclonal Antibody at dilution of 1:500 .

Preparation & Storage

Storage Store at -20°C. Avoid freeze / thaw cycles.

Background

Receptor for interleukin-2.

For Research Use Only