

Phospho-IRS1 (Tyr896) Polyclonal Antibody

Catalog No. E-AB-21407

Note: Centrifuge before opening to ensure complete recovery of vial contents.

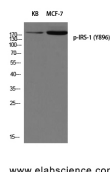
Description

Reactivity	Human, Mouse, Rat
Immunogen	Synthesized peptide derived from human IRS-1 around the phosphorylation site of Tyr896
Host	Rabbit
Isotype	IgG
Purification	Affinity purification
Conjugation	Unconjugated
Buffer	PBS with 0.02% sodium azide, 0.5% protective protein and 50% glycerol, pH7.4

Applications Recommended Dilution

WB 1:500-1:2000

Data



Western Blot analysis of 1) KB, 2) MCF7 cells using Phospho-IRS1 (Tyr896) Polyclonal Antibody at dilution of 1:500

Observed Mw:180kDa
Calculated Mw:132kDa

Preparation & Storage

Storage Store at -20°C. Avoid freeze / thaw cycles.

Background

May mediate the control of various cellular processes by insulin. When phosphorylated by the insulin receptor binds specifically to various cellular proteins containing SH2 domains such as phosphatidylinositol 3-kinase p85 subunit or GRB2. Activates phosphatidylinositol 3-kinase when bound to the regulatory p85 subunit.

For Research Use Only