

Phospho-FAK (Ser843) Polyclonal Antibody

Catalog No. E-AB-21402

Note: Centrifuge before opening to ensure complete recovery of vial contents.

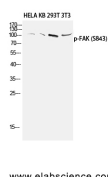
Description

Reactivity	Human, Mouse, Rat
Immunogen	Synthesized peptide derived from human FAK around the phosphorylation site of Ser843
Host	Rabbit
Isotype	IgG
Purification	Affinity purification
Conjugation	Unconjugated
Buffer	PBS with 0.02% sodium azide, 0.5% protective protein and 50% glycerol, pH7.4

Applications Recommended Dilution

WB	1:500-1:2000
ELISA	1:40000

Data



Western Blot analysis of HeLa, KB, 293T, 3T3 cells
with Phospho-FAK (Ser843) Polyclonal Antibody at
dilution of 1:1000

Observed Mw:120kDa
Calculated Mw:119kDa

Preparation & Storage

Storage Store at -20°C. Avoid freeze / thaw cycles.

Background

Non-receptor protein-tyrosine kinase implicated in signaling pathways involved in cell motility, proliferation and apoptosis. Activated by tyrosine-phosphorylation in response to either integrin clustering induced by cell adhesion or antibody cross-linking, or via G-protein coupled receptor (GPCR) occupancy by ligands such as bombesin or lysophosphatidic acid, or via LDL receptor occupancy. Microtubule-induced dephosphorylation at Tyr-397 is crucial for the induction of focal adhesion disassembly. Plays a potential role in oncogenic transformations resulting in increased kinase activity.

For Research Use Only