

Phospho-p70 S6 kinase alpha (Ser418) Polyclonal Antibody



Catalog Number:E-AB-21476

Note: Centrifuge before opening to ensure complete recovery of vial contents.

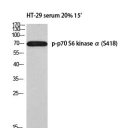
Description

Reactivity	Human,Mouse,Rat
Immunogen	Synthesized peptide derived from human p70 S6 kinase α around the phosphorylation site of Ser418
Host	Rabbit
Isotype	IgG
Purification	Affinity purification
Conjugation	Unconjugated
Formulation	PBS with 0.02% sodium azide, 0.5% protective protein and 50% glycerol, pH7.4

Applications Recommended Dilution

WB	1:500-1:2000
IHC	1:100-1:300
IF	1:200-1:1000
ELISA	1:20000

Data



www.elabscience.com

Western Blot analysis of HT-29 serum 20% 15' cells
using Phospho-p70 S6 kinase alpha (Ser418)
Polyclonal Antibody at dilution of 1:1000

Observed Mw:60kDa
Calculated Mw:59kDa

Preparation & Storage

Storage Store at -20°C. Avoid freeze / thaw cycles.

Background

P70 S6 Kinase alpha is a member of the RSK (ribosomal S6 kinase) family of serine/threonine kinases and contains 2 non-identical kinase catalytic domains. It phosphorylates several residues of the S6 ribosomal protein. The kinase activity of this protein is activated by serine/threonine phosphorylation and protein kinase C and inactivated by type 2A phosphatase. Activation leads to an increase in protein synthesis and cell proliferation. Overexpression of this kinase is involved in some breast cancer cell lines. Alternate translational start sites have been described and alternate transcriptional splice variants have been observed but have not been thoroughly characterized.

For Research Use Only

A Reliable Research Partner in Life Science and Medicine

Toll-free: 1-888-852-8623

Web: www.elabscience.com

Tel: 1-832-243-6086

Email: techsupport@elabscience.com

Fax: 1-832-243-6017