

**Note:** Centrifuge before opening to ensure complete recovery of vial contents.

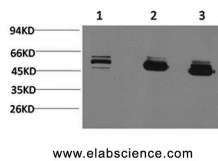
## Description

<b>Reactivity</b>	Human,Mouse,Rat
<b>Immunogen</b>	Recombinant Protein
<b>Host</b>	Mouse
<b>Isotype</b>	IgG
<b>Clone</b>	Clone:4E7
<b>Purification</b>	Protein A purification
<b>Conjugation</b>	Unconjugated
<b>Formulation</b>	PBS with 0.02% sodium azide and 50% glycerol pH 7.4.

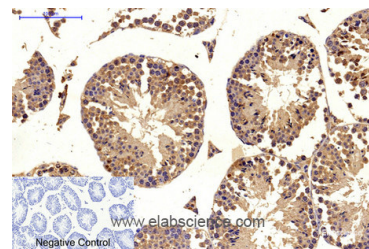
## Applications Recommended Dilution

<b>WB</b>	1:500-1:2000
<b>IHC</b>	1:100-1:200
<b>IF</b>	1:100-1:300

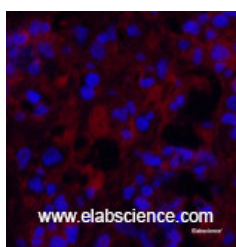
## Data



Western Blot analysis of 1) MCF7, 2) Mouse brain, 3) Rat brain with MICU1 Monoclonal Antibody.  
**Observed Mw:55kDa**



Immunohistochemistry of paraffin-embedded Mouse testis tissue using MICU1 Monoclonal Antibody at dilution of 1:200.



Immunofluorescence analysis of Human appendix tissue using MICU1 Monoclonal Antibody at dilution of 1:200.

## Preparation & Storage

**Storage** Store at -20°C. Avoid freeze / thaw cycles.

## Background

This gene encodes an essential regulator of mitochondrial Ca<sup>2+</sup> uptake under basal conditions. The encoded protein

## For Research Use Only

A Reliable Research Partner in Life Science and Medicine

Toll-free: 1-888-852-8623

Web: [www.elabscience.com](http://www.elabscience.com)

Tel: 1-832-243-6086

Email: [techsupport@elabscience.com](mailto:techsupport@elabscience.com)

Fax: 1-832-243-6017

# MICU1 Monoclonal Antibody

Catalog Number:E-AB-22114



interacts with the mitochondrial calcium uniporter, a mitochondrial inner membrane Ca<sup>2+</sup> channel, and is essential in preventing mitochondrial Ca<sup>2+</sup> overload, which can cause excessive production of reactive oxygen species and cell stress. Alternatively spliced transcript variants encoding different isoforms have been described. MICU1 (Mitochondrial Calcium Uptake 1) is a Protein Coding gene. Diseases associated with MICU1 include Myopathy With Extrapyrimal Signs and Fish Allergy. Among its related pathways are Ca, cAMP and Lipid Signaling. GO annotations related to this gene include calcium ion binding and protein heterodimerization activity. An important paralog of this gene is MICU3.

---

## For Research Use Only

A Reliable Research Partner in Life Science and Medicine

Toll-free: 1-888-852-8623

Web: [www.elabscience.com](http://www.elabscience.com)

Tel: 1-832-243-6086

Email: [techsupport@elabscience.com](mailto:techsupport@elabscience.com)

Fax: 1-832-243-6017