

Phosphoserine Monoclonal Antibody

Catalog Number:E-AB-21334



Note: Centrifuge before opening to ensure complete recovery of vial contents.

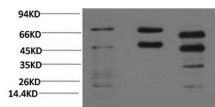
Description

Reactivity	All
Immunogen	Purified Protein
Host	Mouse
Isotype	IgG
Clone	Clone:7A3
Purification	Protein A purification
Conjugation	Unconjugated
Formulation	PBS with 0.02% sodium azide and 50% glycerol pH 7.4.

Applications Recommended Dilution

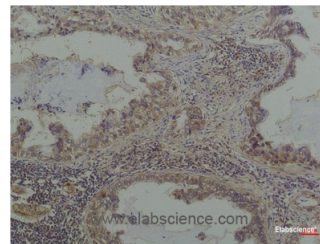
WB	1:500-1:2000
IHC	1:100-1:300
ELISA	1:40000

Data



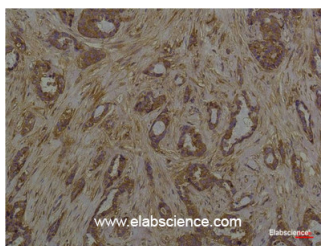
www.elabscience.com

Western Blot analysis of 1) HeLa, 2) Rat brain, 3) Mouse brain with Phosphoserine Monoclonal Antibody at dilution of 1:2000



www.elabscience.com

Immunohistochemistry of paraffin-embedded Human lung carcinoma tissue with Phosphoserine Monoclonal Antibody at dilution of 1:200



www.elabscience.com

Immunohistochemistry of paraffin-embedded Human breast carcinoma tissue with Phosphoserine Monoclonal Antibody at dilution of 1:200

Preparation & Storage

Storage Store at -20°C. Avoid freeze / thaw cycles.

For Research Use Only

A Reliable Research Partner in Life Science and Medicine

Toll-free: 1-888-852-8623

Web: www.elabscience.com

Tel: 1-832-243-6086

Email: techsupport@elabscience.com

Fax: 1-832-243-6017