

## HSP90 alpha Monoclonal Antibody

Catalog No. E-AB-22117

*Note:* Centrifuge before opening to ensure complete recovery of vial contents.

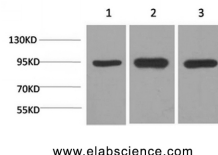
### Description

<b>Reactivity</b>	Human,Mouse,Rat
<b>Immunogen</b>	Synthesized peptide derived from the C-terminal region of human HSP90A
<b>Host</b>	Mouse
<b>Isotype</b>	IgG
<b>Purification</b>	Protein A purification
<b>Conjugation</b>	Unconjugated
<b>Buffer</b>	PBS with 0.02% sodium azide, 0.5% protective protein and 50% glycerol, pH7.4

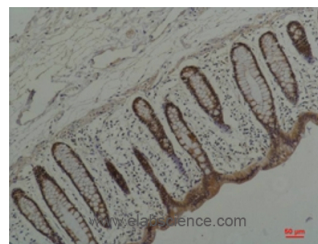
### Applications Recommended Dilution

<b>WB</b>	1:500-1:2000
<b>IHC</b>	1:100-1:300
<b>ELISA</b>	1:40000

### Data



Western Blot analysis of 1) HeLa, 2) Mouse brain, 3) Rat brain using HSP90 alpha Monoclonal Antibody at dilution of 1:2000.  
**Observed Mw:95kDa**



Immunohistochemistry of paraffin-embedded Human colon carcinoma tissue using HSP90 alpha Monoclonal Antibody at dilution of 1:200.

### Preparation & Storage

**Storage** Store at -20°C. Avoid freeze / thaw cycles.

### Background

Molecular chaperone. Has ATPase activity.

### For Research Use Only