

# STAT3 Monoclonal Antibody

Catalog Number:E-AB-22119



**Note:** Centrifuge before opening to ensure complete recovery of vial contents.

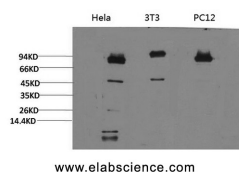
## Description

<b>Reactivity</b>	Human,Mouse,Rat
<b>Immunogen</b>	Recombinant Protein
<b>Host</b>	Mouse
<b>Isotype</b>	IgG
<b>Clone</b>	Clone:4E3
<b>Purification</b>	Protein A purification
<b>Conjugation</b>	Unconjugated
<b>Formulation</b>	PBS with 0.02% sodium azide, 0.5% protective protein and 50% glycerol, pH7.4

## Applications Recommended Dilution

<b>WB</b>	1:1000-2000
<b>IHC</b>	1:100-200

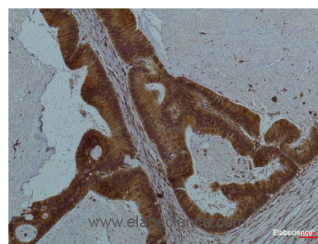
## Data



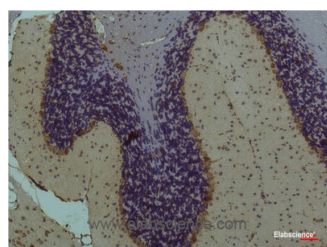
www.elabscience.com

Western Blot analysis of 1) HeLa, 2)3T3, 3) PC-12 cells using STAT3 Monoclonal Antibody at dilution of 1:2000.

**Observed Mw:79,86kDa**



Immunohistochemistry of paraffin-embedded Human colon carcinoma tissue using STAT3 Monoclonal Antibody at dilution of 1:200.



Immunohistochemistry of paraffin-embedded Mouse brain tissue using STAT3 Monoclonal Antibody at dilution of 1:200.

## Preparation & Storage

**Storage** Store at -20°C. Avoid freeze / thaw cycles.

## Background

Signal transducer and transcription activator that mediates cellular responses to interleukins, KITLG/SCF, LEP and other

## For Research Use Only

A Reliable Research Partner in Life Science and Medicine

Toll-free: 1-888-852-8623

Web: [www.elabscience.com](http://www.elabscience.com)

Tel: 1-832-243-6086

Email: [techsupport@elabscience.com](mailto:techsupport@elabscience.com)

Fax: 1-832-243-6017

# STAT3 Monoclonal Antibody

Catalog Number:E-AB-22119



growth factors. Once activated, recruits coactivators, such as NCOA1 or MED1, to the promoter region of the target gene (PubMed:173442)

---

## For Research Use Only

A Reliable Research Partner in Life Science and Medicine

Toll-free: 1-888-852-8623

Tel: 1-832-243-6086

Fax: 1-832-243-6017

Web: [www.elabscience.com](http://www.elabscience.com)

Email: [techsupport@elabscience.com](mailto:techsupport@elabscience.com)