

Acetyl-alpha Tubulin (Lys40) Monoclonal Antibody

Catalog No. E-AB-20302

Note: Centrifuge before opening to ensure complete recovery of vial contents.

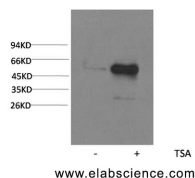
Description

Reactivity	Human,Mouse,Rat
Immunogen	Synthetic Peptide
Host	Mouse
Isotype	IgG
Clone	Clone:6B3
Purification	Protein A purification
Conjugation	Unconjugated
Buffer	PBS with 0.02% sodium azide, 0.5% protective protein and 50% glycerol, pH7.4

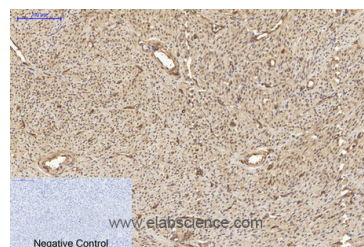
Applications Recommended Dilution

WB	1:500-1:2000
IHC	1:100-1:300
IF	1:100-1:300

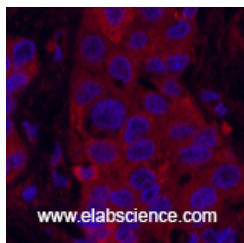
Data



Western Blot analysis of HeLa cells untreated (-) or treated with Acetyl-alpha Tubulin (Lys40) Monoclonal Antibody
Observed Mw:52kDa



Immunohistochemistry of paraffin-embedded Human uterus tissue using Acetyl-alpha Tubulin (Lys40) Monoclonal Antibody at dilution of 1:200.



Immunofluorescence analysis of Human liver cancer tissue using Acetyl-alpha Tubulin (Lys40) Monoclonal Antibody at dilution of 1:200.

For Research Use Only

Preparation & Storage

Storage Store at -20°C. Avoid freeze / thaw cycles.

Background

Tubulin is the major constituent of microtubules. It binds two moles of GTP, one at an exchangeable site on the beta chain and one at a non-exchangeable site on the alpha chain.