

## AMPK alpha1 Monoclonal Antibody

Catalog No. E-AB-22125

*Note:* Centrifuge before opening to ensure complete recovery of vial contents.

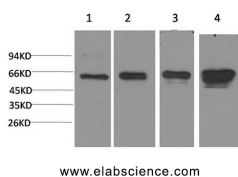
### Description

<b>Reactivity</b>	Human,Mouse,Rat
<b>Immunogen</b>	Synthetic Peptide
<b>Host</b>	Mouse
<b>Isotype</b>	IgG
<b>Purification</b>	Protein A purification
<b>Conjugation</b>	Unconjugated
<b>Buffer</b>	PBS with 0.02% sodium azide, 0.5% protective protein and 50% glycerol, pH7.4

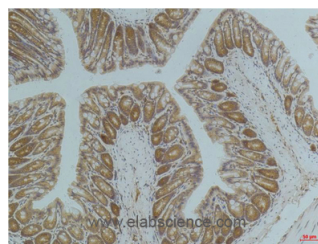
### Applications Recommended Dilution

<b>WB</b>	1:1000-2000
<b>IHC</b>	1:50-100

### Data



Western Blot analysis of 1) HeLa, 2) 293T, 3) 3T3, 4) PC-12 cells using AMPK alpha1 Monoclonal Antibody at dilution of 1:2000.  
**Observed Mw:63kDa**



Immunohistochemistry of paraffin-embedded Mouse colon tissue using AMPK alpha1 Monoclonal Antibody at dilution of 1:200.

### Preparation & Storage

**Storage** Store at -20°C. Avoid freeze / thaw cycles.

### Background

Responsible for the regulation of fatty acid synthesis by phosphorylation of acetyl-CoA carboxylase. It also regulates cholesterol synthesis via phosphorylation and inactivation of hormone-sensitive lipase and hydroxymethylglutaryl-CoA reductase. Appears to act as a metabolic stress-sensing protein kinase switching off biosynthetic pathways when cellular ATP levels are depleted and when 5'-AMP rises in response to fuel limitation and/or hypoxia. This is a catalytic subunit.

### For Research Use Only