

Phospho-CAMK2 beta/gamma/delta (Thr287) Monoclonal Antibody

Catalog No. E-AB-51036

Note: Centrifuge before opening to ensure complete recovery of vial contents.

Description

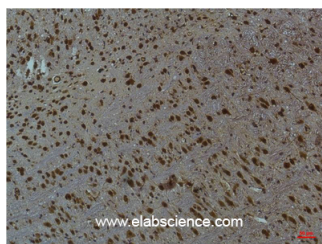
Reactivity	Human,Mouse,Rat
Immunogen	Synthetic Peptide
Host	Mouse
Isotype	IgG
Clone	Clone:5E1
Purification	Protein A purification
Conjugation	Unconjugated
Buffer	PBS with 0.02% sodium azide, 0.5% protective protein and 50% glycerol, pH7.4

Applications

Recommended Dilution

IHC 1:100-200

Data



Immunohistochemistry of paraffin-embedded Mouse brain tissue using Phospho-CAMK2 beta/gamma/delta (Thr287) Monoclonal Antibody at dilution of 1:200

Preparation & Storage

Storage Store at -20°C. Avoid freeze / thaw cycles.

Background

CAMK2B (Calcium/Calmodulin Dependent Protein Kinase II Beta) is a Protein Coding gene. Diseases associated with CAMK2B include Phencyclidine Abuse. Among its related pathways are ICos-ICosL Pathway in T-Helper Cell and Development Endothelin-1/EDNRA signaling. GO annotations related to this gene include protein homodimerization activity and protein kinase activity. An important paralog of this gene is CAMK2G. CAMK2G (Calcium/Calmodulin Dependent Protein Kinase II Gamma) is a Protein Coding gene. Diseases associated with CAMK2G include Timothy Syndrome and Exudative Vitreoretinopathy. Among its related pathways are ICos-ICosL Pathway in T-Helper Cell and Development Endothelin-1/EDNRA signaling. GO annotations related to this gene include protein homodimerization activity and protein kinase activity. An important paralog of this gene is CAMK2B. CAMK2D (Calcium/Calmodulin Dependent Protein Kinase II Delta) is a Protein Coding gene. Diseases associated with CAMK2D include Dilated Cardiomyopathy and Cardiomyopathy. Among its related pathways are ICos-ICosL Pathway in T-Helper Cell and Development Endothelin-1/EDNRA signaling. GO annotations related to this gene include protein homodimerization

For Research Use Only

activity and protein kinase activity. An important paralog of this gene is CAMK2B.