

**Note:** Centrifuge before opening to ensure complete recovery of vial contents.

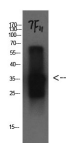
## Description

<b>Reactivity</b>	Human
<b>Immunogen</b>	Recombinant Protein of Cystatin C of CST3
<b>Host</b>	Mouse
<b>Isotype</b>	IgG
<b>Clone</b>	Clone:3B6
<b>Purification</b>	Protein A purification
<b>Conjugation</b>	Unconjugated
<b>Formulation</b>	PBS with 0.02% sodium azide, 0.5% protective protein and 50% glycerol, pH7.4

## Applications Recommended Dilution

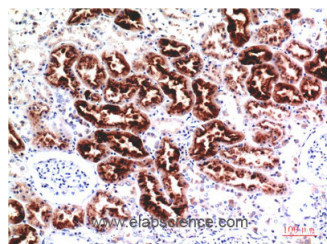
<b>WB</b>	1:1000-2000
<b>IHC</b>	1:100-200
<b>IF</b>	1:50-1:200

## Data

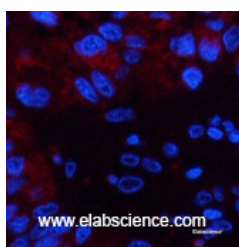


www.elabscience.com

Western Blot analysis of Cystatin C protein using CST3 Monoclonal Antibody at dilution of 1:1000.  
**Observed Mw:14kDa**



Immunohistochemistry of paraffin-embedded Human kidney tissue using CST3 Monoclonal Antibody at dilution of 1:200.



Immunofluorescence analysis of Human liver cancer tissue using CST3 Monoclonal Antibody at dilution of 1:200.

## Preparation & Storage

**Storage** Store at -20°C. Avoid freeze / thaw cycles.

## Background

As an inhibitor of cysteine proteinases, this protein is thought to serve an important physiological role as a local regulator

## For Research Use Only

A Reliable Research Partner in Life Science and Medicine

Toll-free: 1-888-852-8623

Web: [www.elabscience.com](http://www.elabscience.com)

Tel: 1-832-243-6086

Email: [techsupport@elabscience.com](mailto:techsupport@elabscience.com)

Fax: 1-832-243-6017

# CST3 Monoclonal Antibody

Catalog Number: E-AB-22129



of this enzyme activity. Known to inhibit cathepsin B, H, and L.

---

## For Research Use Only

A Reliable Research Partner in Life Science and Medicine

Toll-free: 1-888-852-8623

Tel: 1-832-243-6086

Fax: 1-832-243-6017

Web: [www.elabscience.com](http://www.elabscience.com)

Email: [techsupport@elabscience.com](mailto:techsupport@elabscience.com)