

Ubiquitin Monoclonal Antibody

Catalog Number:E-AB-22131



Note: Centrifuge before opening to ensure complete recovery of vial contents.

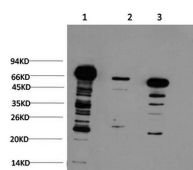
Description

| | |
|---------------------|--|
| Reactivity | Human,Mouse,Rat |
| Immunogen | Synthetic Peptide of Ubiquitin |
| Host | Mouse |
| Isotype | IgG |
| Clone | Clone:6C4 |
| Purification | Protein A purification |
| Conjugation | Unconjugated |
| Formulation | PBS with 0.02% sodium azide, 0.5% protective protein and 50% glycerol, pH7.4 |

Applications Recommended Dilution

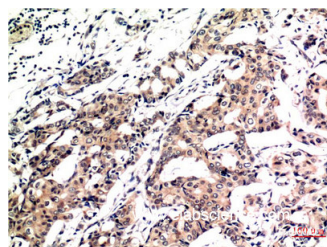
| | |
|------------|--------------|
| WB | 1:500-1:2000 |
| IHC | 1:100-1:200 |
| IF | 1:100-1:300 |

Data

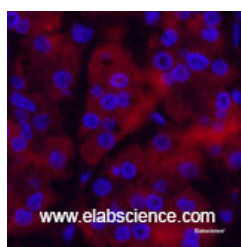


www.elabscience.com

Western Blot analysis of 1) HeLa, 2) 3T3, 3) Rat brain using Ubiquitin Monoclonal Antibody at dilution of 1:1000.



Immunohistochemistry of paraffin-embedded Human breast carcinoma tissue using Ubiquitin Monoclonal Antibody at dilution of 1:200.



www.elabscience.com

Immunofluorescence analysis of Human stomach cancer tissue using Ubiquitin Monoclonal Antibody at dilution of 1:200.

Preparation & Storage

Storage Store at -20°C. Avoid freeze / thaw cycles.

Background

This gene encodes a member of a subfamily of the adenosine deaminase protein family. The encoded protein is one of

For Research Use Only

A Reliable Research Partner in Life Science and Medicine

Toll-free: 1-888-852-8623

Web: www.elabscience.com

Tel: 1-832-243-6086

Email: techsupport@elabscience.com

Fax: 1-832-243-6017

Ubiquitin Monoclonal Antibody

Catalog Number:E-AB-22131



two adenosine deaminases found in humans, which regulate levels of the signaling molecule, adenosine. The encoded protein is secreted from monocytes undergoing differentiation and may regulate cell proliferation and differentiation. This gene may be responsible for some of the phenotypic features associated with cat eye syndrome. Alternative splicing results in multiple transcript variants. ADA2 (Adenosine Deaminase 2) is a Protein Coding gene. Diseases associated with ADA2 include Sneddon Syndrome and Polyarteritis Nodosa, Childhood-Onset. Among its related pathways are Innate Immune System and Metabolism of proteins.

For Research Use Only

A Reliable Research Partner in Life Science and Medicine

Toll-free: 1-888-852-8623

Tel: 1-832-243-6086

Fax: 1-832-243-6017

Web: www.elabscience.com

Email: techsupport@elabscience.com