

Luciferase Monoclonal Antibody

Catalog Number:E-AB-22134



Note: Centrifuge before opening to ensure complete recovery of vial contents.

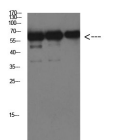
Description

Reactivity	Firefly
Immunogen	Recombinant Protein of Luciferase of Luciferase
Host	Mouse
Isotype	IgG
Clone	Clone:2C2
Purification	Protein A purification
Conjugation	Unconjugated
Formulation	PBS with 0.02% sodium azide, 0.5% protective protein and 50% glycerol, pH7.4

Applications Recommended Dilution

WB 1:1000-2000

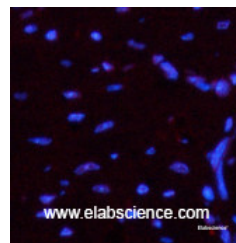
Data



www.elabscience.com

Western Blot analysis of Luciferase protein using Luciferase Monoclonal Antibody at dilution of 1:1000.

Observed Mw:60kDa



Immunofluorescence analysis of Mouse heart tissue using Luciferase Monoclonal Antibody at dilution of 1:200.

Preparation & Storage

Storage Store at -20°C. Avoid freeze / thaw cycles.

Background

Luciferase from the firefly has become one of the more widely used reporter proteins for the study of gene expression. Luciferase catalyzes a bioluminescent reaction which requires the substrate luciferin as well as Mg²⁺ and ATP. Mixing these reagents with the cell extract containing luciferase, results in a flash of light that decays rapidly. This light can be detected by a luminometer. The total light emission is proportional to the luciferase activity of the sample.

For Research Use Only

A Reliable Research Partner in Life Science and Medicine

Toll-free: 1-888-852-8623

Web: www.elabscience.com

Tel: 1-832-243-6086

Email: techsupport@elabscience.com

Fax: 1-832-243-6017