

# ACTA1 Monoclonal Antibody

Catalog Number:E-AB-22135



**Note:** Centrifuge before opening to ensure complete recovery of vial contents.

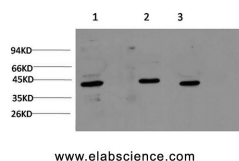
## Description

<b>Reactivity</b>	Human,Mouse,Rat
<b>Immunogen</b>	Synthetic Peptide of Muscle actin
<b>Host</b>	Mouse
<b>Isotype</b>	IgG
<b>Clone</b>	Clone:6B3
<b>Purification</b>	Protein A purification
<b>Conjugation</b>	Unconjugated
<b>Formulation</b>	PBS with 0.02% sodium azide, 0.5% protective protein and 50% glycerol, pH7.4

## Applications Recommended Dilution

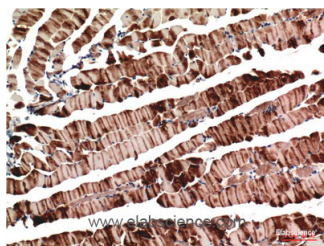
<b>WB</b>	1:1000-2000
<b>IHC</b>	1:100-200

## Data

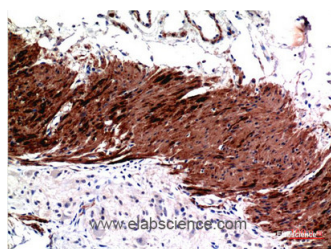


Western Blot analysis of 1) HeLa, 2) 3T3, 3) Rat brain using ACTA1 Monoclonal Antibody at dilution of 1:1000.

**Observed Mw:42kDa**



Immunohistochemistry of paraffin-embedded Mouse skeletal muscle tissue using ACTA1 Monoclonal Antibody at dilution of 1:200.



Immunohistochemistry of paraffin-embedded Human colon carcinoma tissue using ACTA1 Monoclonal Antibody at dilution of 1:200.

## Preparation & Storage

**Storage** Store at -20°C. Avoid freeze / thaw cycles.

## Background

Actins are highly conserved proteins that are involved in various types of cell motility and are ubiquitously expressed in all

## For Research Use Only

A Reliable Research Partner in Life Science and Medicine

Toll-free: 1-888-852-8623

Web: [www.elabscience.com](http://www.elabscience.com)

Tel: 1-832-243-6086

Email: [techsupport@elabscience.com](mailto:techsupport@elabscience.com)

Fax: 1-832-243-6017

# ACTA1 Monoclonal Antibody

Catalog Number:E-AB-22135



eukaryotic cells.

---

## For Research Use Only

A Reliable Research Partner in Life Science and Medicine

Toll-free: 1-888-852-8623

Web: [www.elabscience.com](http://www.elabscience.com)

Tel: 1-832-243-6086

Email: [techsupport@elabscience.com](mailto:techsupport@elabscience.com)

Fax: 1-832-243-6017