

MAP1LC3A Monoclonal Antibody

Catalog No. E-AB-22136

Note: Centrifuge before opening to ensure complete recovery of vial contents.

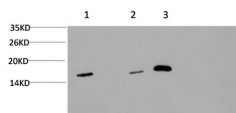
Description

Reactivity	Human, Mouse, Rat
Immunogen	Synthetic Peptide of LC3A
Host	Mouse
Isotype	IgG
Clone	7E4
Purification	Protein A purification
Conjugation	Unconjugated
Buffer	PBS with 0.02% sodium azide, 0.5% protective protein and 50% glycerol, pH7.4

Applications Recommended Dilution

WB	1:500-1:2000
IHC	1:100-1:200
IF	1:100-1:300

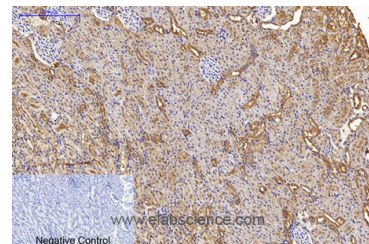
Data



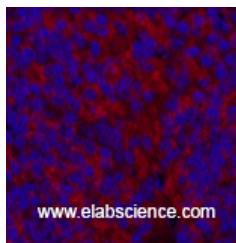
www.elabscience.com

Western Blot analysis of 1) Hela, 2) 3T3, 3) Rat brain using MAP1LC3A Monoclonal Antibody at dilution of 1:1000.

Observed Mw:14,16kDa



Immunohistochemistry of paraffin-embedded Rat kidney tissue using MAP1LC3A Monoclonal Antibody at dilution of 1:200.



www.elabscience.com

Immunofluorescence analysis of Mouse spleen tissue using MAP1LC3A Monoclonal Antibody at dilution of 1:200.

For Research Use Only

Preparation & Storage

Storage Store at -20°C. Avoid freeze / thaw cycles.

Background

MAP1A and MAP1B are microtubule-associated proteins which mediate the physical interactions between microtubules and components of the cytoskeleton. MAP1A and MAP1B each consist of a heavy chain subunit and multiple light chain subunits. The protein encoded by this gene is one of the light chain subunits and can associate with either MAP1A or MAP1B. Two transcript variants encoding different isoforms have been found for this gene. The expression of variant 1 is suppressed in many tumor cell lines, suggesting that may be involved in carcinogenesis.

For Research Use Only