

gamma Tubulin Monoclonal Antibody

Catalog Number:E-AB-22137



Note: Centrifuge before opening to ensure complete recovery of vial contents.

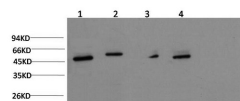
Description

Reactivity	Human,Mouse,Rat
Immunogen	Synthetic Peptide of Gamma Tubulin
Host	Mouse
Isotype	IgG
Clone	Clone:3E4
Purification	Protein A purification
Conjugation	Unconjugated
Formulation	PBS with 0.02% sodium azide, 0.5% protective protein and 50% glycerol, pH7.4

Applications Recommended Dilution

WB	1:1000-2000
IHC	1:100-200

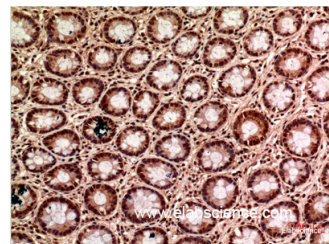
Data



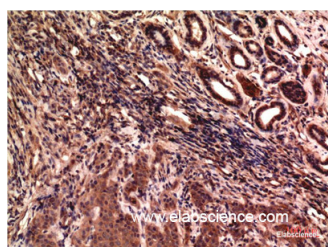
www.elabscience.com

Western Blot analysis of Jurkat, Hela, Mouse brain, Rat brain using gamma Tubulin Monoclonal Antibody at dilution of 1:1000.

Observed Mw:50kDa



Immunohistochemistry of paraffin-embedded Human colon carcinoma tissue using gamma Tubulin Monoclonal Antibody at dilution of 1:200.



Immunohistochemistry of paraffin-embedded Human breast carcinoma tissue using gamma Tubulin Monoclonal Antibody at dilution of 1:200.

Preparation & Storage

Storage Store at -20°C. Avoid freeze / thaw cycles.

Background

This gene encodes a member of the tubulin superfamily. The encoded protein localizes to the centrosome where it binds

For Research Use Only

A Reliable Research Partner in Life Science and Medicine

Toll-free: 1-888-852-8623

Web: www.elabscience.com

Tel: 1-832-243-6086

Email: techsupport@elabscience.com

Fax: 1-832-243-6017

gamma Tubulin Monoclonal Antibody

Catalog Number:E-AB-22137



to microtubules as part of a complex referred to as the gamma-tubulin ring complex. The protein mediates microtubule nucleation and is required for microtubule formation and progression of the cell cycle. A pseudogene of this gene is found on chromosome 7. TUBG1 (Tubulin Gamma 1) is a Protein Coding gene. Diseases associated with TUBG1 include Cortical Dysplasia, Complex, With Other Brain Malformations 4 and Reducing Body Myopathy. Among its related pathways are Regulation of PLK1 Activity at G2/M Transition and Sertoli-Sertoli Cell Junction Dynamics. GO annotations related to this gene include GTP binding and structural constituent of cytoskeleton. An important paralog of this gene is TUBG2.

For Research Use Only

A Reliable Research Partner in Life Science and Medicine

Toll-free: 1-888-852-8623

Tel: 1-832-243-6086

Fax: 1-832-243-6017

Web: www.elabscience.com

Email: techsupport@elabscience.com