

epsilon Tubulin Monoclonal Antibody

Catalog No. E-AB-22138

Note: Centrifuge before opening to ensure complete recovery of vial contents.

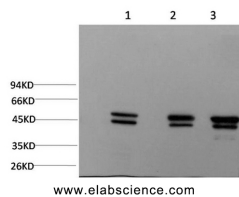
Description

Reactivity	Human,Mouse,Rat
Immunogen	Synthetic Peptide of Epsilon Tubulin
Host	Mouse
Isotype	IgG
Purification	Protein A purification
Conjugation	Unconjugated
Buffer	PBS with 0.02% sodium azide, 0.5% protective protein and 50% glycerol, pH7.4

Applications Recommended Dilution

WB 1:1000-2000

Data



Western Blot analysis of 1) MCF7, 2) Rat brain, 3) Mouse brain using Epsilon Tubulin Monoclonal Antibody at dilution of 1:2000.
Observed Mw:55kDa

Preparation & Storage

Storage Store at -20°C. Avoid freeze / thaw cycles.

Background

This gene encodes a member of the tubulin superfamily. This protein localizes to the centriolar sub-distal appendages that are associated with the older of the two centrioles after centrosome duplication. This protein plays a central role in organization of the microtubules during centriole duplication. A pseudogene of this gene is found on chromosome 5. TUBE1 (Tubulin Epsilon 1) is a Protein Coding gene. Diseases associated with TUBE1 include Chronic Frontal Sinusitis and Frontal Sinusitis. Among its related pathways are Sertoli-Sertoli Cell Junction Dynamics and Chks in Checkpoint Regulation. GO annotations related to this gene include GTP binding and structural constituent of cytoskeleton. An important paralog of this gene is TUBB4B.

For Research Use Only