

## Tau Monoclonal Antibody

Catalog No. E-AB-22141

*Note:* Centrifuge before opening to ensure complete recovery of vial contents.

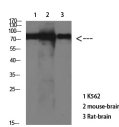
### Description

<b>Reactivity</b>	Human,Mouse,Rat
<b>Immunogen</b>	Synthetic Peptide of Tau
<b>Host</b>	Mouse
<b>Isotype</b>	IgG
<b>Purification</b>	Protein A purification
<b>Conjugation</b>	Unconjugated
<b>Buffer</b>	PBS with 0.02% sodium azide, 0.5% protective protein and 50% glycerol, pH7.4

### Applications Recommended Dilution

<b>WB</b>	1:1000-2000
<b>IHC</b>	1:100-200

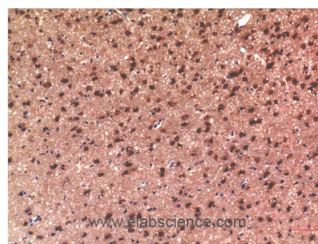
### Data



www.elabscience.com

Western Blot analysis of various cells using Tau Polyclonal Antibody at dilution of 1:1000.

**Observed Mw:79kDa**



www.elabscience.com

Immunohistochemistry of paraffin-embedded Rat brain tissue using Tau Polyclonal Antibody at dilution of 1:200.

### Preparation & Storage

**Storage** Store at -20°C. Avoid freeze / thaw cycles.

### Background

Promotes microtubule assembly and stability, and might be involved in the establishment and maintenance of neuronal polarity. The C-terminus binds axonal microtubules while the N-terminus binds neural plasma membrane components, suggesting that tau functions as a linker protein between both. Axonal polarity is predetermined by tau localization (in the neuronal cell) in the domain of the cell body defined by the centrosome. The short isoforms allow plasticity of the cytoskeleton whereas the longer isoforms may preferentially play a role in its stabilization.

### For Research Use Only