

Note: Centrifuge before opening to ensure complete recovery of vial contents.

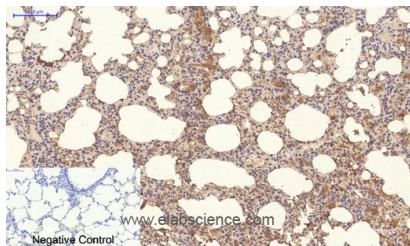
Description

Reactivity	Human,Mouse,Rat
Immunogen	Recombinant Protein of NBR1
Host	Mouse
Isotype	IgG
Clone	Clone:4C6
Purification	Protein A purification
Conjugation	Unconjugated
Formulation	PBS with 0.02% sodium azide and 50% glycerol pH 7.4.

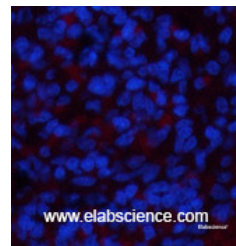
Applications Recommended Dilution

IHC	1:50-300
IF	1:50-1:200

Data



Immunohistochemistry of paraffin-embedded Rat lung tissue using NBR1 Monoclonal Antibody at dilution of 1:200.



Immunofluorescence analysis of Rat spleen tissue using NBR1 Monoclonal Antibody at dilution of 1:200.

Preparation & Storage

Storage Store at -20°C. Avoid freeze / thaw cycles.

Background

The protein encoded by this gene was originally identified as an ovarian tumor antigen monitored in ovarian cancer. The encoded protein contains a B-box/coiled-coil motif, which is present in many genes with transformation potential. It functions as a specific autophagy receptor for the selective autophagic degradation of peroxisomes by forming intracellular inclusions with ubiquitylated autophagic substrates. This gene is located on a region of chromosome 17q21.1 that is in close proximity to the BRCA1 tumor suppressor gene. Alternative splicing of this gene results in multiple transcript variants. NBR1 (NBR1, Autophagy Cargo Receptor) is a Protein Coding gene. Diseases associated with NBR1 include Inclusion Body Myositis and Synucleinopathy. Among its related pathways are Mitophagy - animal. GO annotations related to this gene include ubiquitin binding and mitogen-activated protein kinase binding.

For Research Use Only

A Reliable Research Partner in Life Science and Medicine

Toll-free: 1-888-852-8623

Web: www.elabscience.com

Tel: 1-832-243-6086

Email: techsupport@elabscience.com

Fax: 1-832-243-6017