

Note: Centrifuge before opening to ensure complete recovery of vial contents.

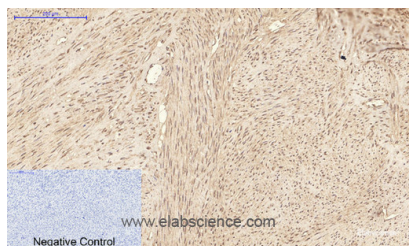
Description

Reactivity	Human,Mouse,Rat
Immunogen	Recombinant Protein of ATG7
Host	Mouse
Isotype	IgG
Clone	Clone:1A1
Purification	Protein A purification
Conjugation	Unconjugated
Formulation	PBS with 0.02% sodium azide and 50% glycerol pH 7.4.

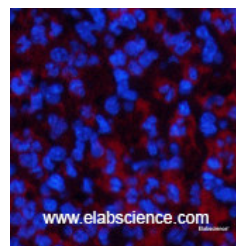
Applications Recommended Dilution

IHC	1:50-300
IF	1:50-1:200

Data



Immunohistochemistry of paraffin-embedded Human uterus tissue using ATG7 Monoclonal Antibody at dilution of 1:200.



Immunofluorescence analysis of Mouse spleen tissue using ATG7 Monoclonal Antibody at dilution of 1:200.

Preparation & Storage

Storage Store at -20°C. Avoid freeze / thaw cycles.

Background

ATG7 (Autophagy Related 7) is a Protein Coding gene. Among its related pathways are Autophagy Pathway and Innate Immune System. GO annotations related to this gene include protein homodimerization activity and ubiquitin activating enzyme activity. This gene encodes an E1-like activating enzyme that is essential for autophagy and cytoplasmic to vacuole transport. The encoded protein is also thought to modulate p53-dependent cell cycle pathways during prolonged metabolic stress. It has been associated with multiple functions, including axon membrane trafficking, axonal homeostasis, mitophagy, adipose differentiation, and hematopoietic stem cell maintenance. Alternative splicing results in multiple transcript variants.

For Research Use Only

A Reliable Research Partner in Life Science and Medicine

Toll-free: 1-888-852-8623

Web: www.elabscience.com

Tel: 1-832-243-6086

Email: techsupport@elabscience.com

Fax: 1-832-243-6017