

Phospho-MCL1 (Ser159) Polyclonal Antibody

Catalog No. E-AB-21741

Note: Centrifuge before opening to ensure complete recovery of vial contents.

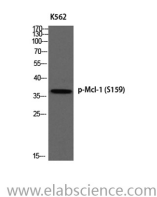
Description

Reactivity	Human, Mouse
Immunogen	Synthesized peptide derived from human Mcl-1 around the phosphorylation site of S159.
Host	Rabbit
Isotype	IgG
Purification	Affinity purification
Buffer	PBS with 0.02% sodium azide, 0.5% protective protein and 50% glycerol, pH7.4

Applications Recommended Dilution

IF	1:200-1:1000
ELISA	1:10000

Data



Western Blot analysis of K562 cells with Phospho-MCL1 (Ser159) Polyclonal Antibody

Observed Mw:39kDa
Calculated Mw:37kDa

Preparation & Storage

Storage Store at -20°C. Avoid freeze / thaw cycles.

Background

This gene encodes an anti-apoptotic protein, which is a member of the Bcl-2 family. Alternative splicing results in multiple transcript variants. The longest gene product (isoform 1) enhances cell survival by inhibiting apoptosis while the alternatively spliced shorter gene products (isoform 2 and isoform 3) promote apoptosis and are death-inducing.

For Research Use Only