

Phospho-14-3-3 theta (Ser232) Polyclonal Antibody

Catalog No. E-AB-21804

Note: Centrifuge before opening to ensure complete recovery of vial contents.

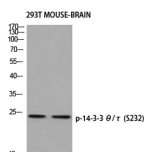
Description

Reactivity	Human, Mouse, Rat
Immunogen	Synthesized peptide derived from human 14-3-3 θ/τ around the phosphorylation site of S232.
Host	Rabbit
Isotype	IgG
Purification	Affinity purification
Buffer	PBS with 0.02% sodium azide, 0.5% protective protein and 50% glycerol, pH7.4

Applications Recommended Dilution

WB	1:500-1:2000
IHC	1:100-1:300
IF	1:200-1:1000
ELISA	1:5000

Data



www.elabscience.com

Western Blot analysis of 293T, Mouse brain using Phospho-14-3-3 theta (Ser232) Polyclonal Antibody at dilution of 1:500.

Observed Mw:28kDa
Calculated Mw:28kDa

Preparation & Storage

Storage Store at -20°C. Avoid freeze / thaw cycles.

Background

Adapter protein implicated in the regulation of a large spectrum of both general and specialized signaling pathways. Binds to a large number of partners, usually by recognition of a phosphoserine or phosphothreonine motif. Binding generally results in the modulation of the activity of the binding partner. Negatively regulates the kinase activity of PDPK1.

For Research Use Only