

Phospho-TOP2A (Thr1343) Polyclonal Antibody

Catalog No. E-AB-21931

Note: Centrifuge before opening to ensure complete recovery of vial contents.

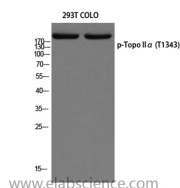
Description

| | |
|---------------------|---|
| Reactivity | Human |
| Immunogen | Synthesized peptide derived from human Topo II α around the phosphorylation site of T1343. |
| Host | Rabbit |
| Isotype | IgG |
| Purification | Affinity purification |
| Buffer | PBS with 0.02% sodium azide, 0.5% protective protein and 50% glycerol, pH7.4 |

Applications Recommended Dilution

| | |
|--------------|--------------|
| WB | 1:500-1:2000 |
| ELISA | 1:5000 |

Data



Western Blot analysis of 293T, COLO cells using Phospho-TOP2A (Thr1343) Polyclonal Antibody at dilution of 1:2000.

Observed Mw:190kDa
Calculated Mw:174kDa

Preparation & Storage

Storage Store at -20°C. Avoid freeze / thaw cycles.

Background

This gene encodes a DNA topoisomerase, an enzyme that controls and alters the topologic states of DNA during transcription. This nuclear enzyme is involved in processes such as chromosome condensation, chromatid separation, and the relief of torsional stress that occurs during DNA transcription and replication. It catalyzes the transient breaking and rejoining of two strands of duplex DNA which allows the strands to pass through one another, thus altering the topology of DNA. Two forms of this enzyme exist as likely products of a gene duplication event. The gene encoding this form, alpha, is localized to chromosome 17 and the beta gene is localized to chromosome 3. The gene encoding this enzyme functions as the target for several anticancer agents and a variety of mutations in this gene have been associated with the development of drug resistance. Reduced activity of this enzyme may also play a role in ataxia-telangiectasia.

For Research Use Only