

## Phospho-SF1 (Ser82) Polyclonal Antibody

Catalog No. E-AB-21962

**Note:** Centrifuge before opening to ensure complete recovery of vial contents.

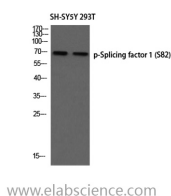
### Description

<b>Reactivity</b>	Human, Mouse, Monkey
<b>Immunogen</b>	Synthesized peptide derived from human Splicing factor 1 around the phosphorylation site of S82.
<b>Host</b>	Rabbit
<b>Isotype</b>	IgG
<b>Purification</b>	Affinity purification
<b>Buffer</b>	PBS with 0.02% sodium azide, 0.5% protective protein and 50% glycerol, pH7.4

### Applications Recommended Dilution

<b>WB</b>	1:500-1:2000
<b>IHC</b>	1:100-1:300
<b>IF</b>	1:200-1:1000
<b>ELISA</b>	1:5000

### Data



www.elabscience.com

Western Blot analysis of SH-SY5Y, 293T cells using Phospho-SF1 (Ser82) Polyclonal Antibody at dilution of 1:500.

**Observed Mw:68kDa**  
**Calculated Mw:68kDa**

### Preparation & Storage

**Storage** Store at -20°C. Avoid freeze / thaw cycles.

### Background

This gene encodes a nuclear pre-mRNA splicing factor. The encoded protein specifically recognizes the intron branch point sequence at the 3' splice site, together with the large subunit of U2 auxiliary factor (U2AF), and is required for the early stages of spliceosome assembly. It also plays a role in nuclear pre-mRNA retention and transcriptional repression. The encoded protein contains an N-terminal U2AF ligand motif, a central hnRNP K homology motif and quaking 2 region which bind a key branch-site adenosine within the branch point sequence, a zinc knuckles domain, and a C-terminal proline-rich domain. Alternative splicing results in multiple transcript variants.

### For Research Use Only