

# HSP90 alpha Monoclonal Antibody

Catalog Number:E-AB-22160



**Note:** Centrifuge before opening to ensure complete recovery of vial contents.

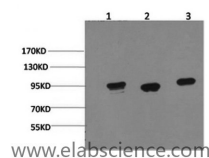
## Description

<b>Reactivity</b>	Human,Mouse,Rat
<b>Immunogen</b>	Synthesized peptide derived from the C-terminal region of human HSP90A
<b>Host</b>	Mouse
<b>Isotype</b>	IgG
<b>Purification</b>	Protein A purification
<b>Formulation</b>	PBS with 0.02% sodium azide, 0.5% protective protein and 50% glycerol, pH7.4

## Applications Recommended Dilution

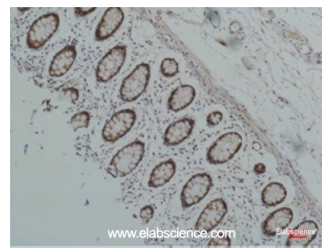
<b>WB</b>	1:500-1:2000
<b>IHC</b>	1:100-1:300
<b>ELISA</b>	1:40000

## Data



Western Blot analysis of 1) Hela, 2) Mouse brain, 3) Rat brain using HSP90 alpha Monoclonal Antibody at dilution of 1:2000.

**Observed Mw:95kDa**



Immunohistochemistry of paraffin-embedded Human colon carcinoma tissue using HSP90 alpha Monoclonal Antibody at dilution of 1:200.

## Preparation & Storage

**Storage** Store at -20°C. Avoid freeze / thaw cycles.

## Background

Molecular chaperone. Has ATPase activity.

## For Research Use Only

A Reliable Research Partner in Life Science and Medicine

Toll-free: 1-888-852-8623

Web: [www.elabscience.com](http://www.elabscience.com)

Tel: 1-832-243-6086

Email: [techsupport@elabscience.com](mailto:techsupport@elabscience.com)

Fax: 1-832-243-6017