

HSPA5 Monoclonal Antibody

Catalog Number: E-AB-22167

Note: Centrifuge before opening to ensure complete recovery of vial contents.

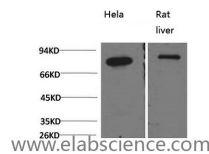
Description

Reactivity	Human, Rat
Immunogen	Synthetic Peptide
Host	Mouse
Isotype	IgG
Purification	Protein A purification
Formulation	PBS with 0.02% sodium azide, 0.5% protective protein and 50% glycerol, pH7.4

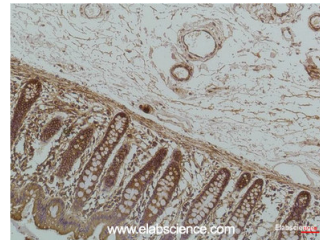
Applications Recommended Dilution

WB	1:1000-2000
IHC	1:100-200

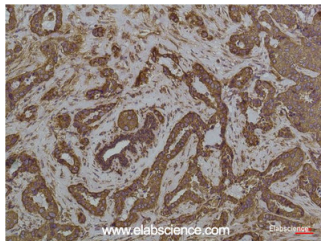
Data



Western Blot analysis of 1) HeLa, 2) Rat liver using HSPA5 Monoclonal Antibody at dilution of 1:2000.
Observed Mw:78kDa



Immunohistochemistry of paraffin-embedded Human colon carcinoma tissue using HSPA5 Monoclonal Antibody at dilution of 1:200.



Immunohistochemistry of paraffin-embedded Human breast carcinoma tissue using HSPA5 Monoclonal Antibody at dilution of 1:200.

Preparation & Storage

Storage Store at -20°C. Avoid freeze / thaw cycles.

Background

Probably plays a role in facilitating the assembly of multimeric protein complexes inside the endoplasmic reticulum. Involved in the correct folding of proteins and degradation of misfolded proteins via its interaction with DNAJC10, probably to facilitate the release of DNAJC10 from its substrate.

For Research Use Only

A Reliable Research Partner in Life Science and Medicine

Toll-free: 1-888-852-8623

Web: www.elabscience.com

Tel: 1-832-243-6086

Email: techsupport@elabscience.com

Fax: 1-832-243-6017