

# Phospho-CAMK2 beta/gamma/delta (Thr287) Monoclonal Antibody



Catalog Number:E-AB-51035

**Note:** Centrifuge before opening to ensure complete recovery of vial contents.

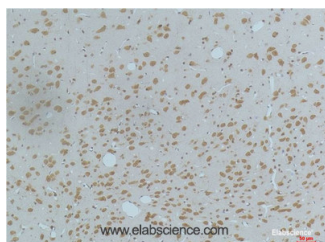
## Description

<b>Reactivity</b>	Human,Mouse,Rat
<b>Immunogen</b>	Synthetic Peptide
<b>Host</b>	Mouse
<b>Isotype</b>	IgG
<b>Purification</b>	Protein A purification
<b>Formulation</b>	PBS with 0.02% sodium azide, 0.5% protective protein and 50% glycerol, pH7.4

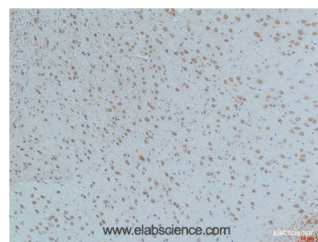
## Applications Recommended Dilution

<b>IHC</b>	1:100-200
------------	-----------

## Data



Immunohistochemistry of paraffin-embedded Rat brain tissue using Phospho-CAMK2 beta/gamma/delta (Thr287) Monoclonal Antibody at dilution of 1:200.



Immunohistochemistry of paraffin-embedded Mouse brain tissue using Phospho-CAMK2 beta/gamma/delta (Thr287) Monoclonal Antibody at dilution of 1:200.

## Preparation & Storage

<b>Storage</b>	Store at -20°C. Avoid freeze / thaw cycles.
----------------	---

## Background

CAMK2B (Calcium/Calmodulin Dependent Protein Kinase II Beta) is a Protein Coding gene. Diseases associated with CAMK2B include Phencyclidine Abuse. Among its related pathways are ICos-ICosL Pathway in T-Helper Cell and Development Endothelin-1/EDNRA signaling. GO annotations related to this gene include protein homodimerization activity and protein kinase activity. An important paralog of this gene is CAMK2G. CAMK2G (Calcium/Calmodulin Dependent Protein Kinase II Gamma) is a Protein Coding gene. Diseases associated with CAMK2G include Timothy Syndrome and Exudative Vitreoretinopathy. Among its related pathways are ICos-ICosL Pathway in T-Helper Cell and Development Endothelin-1/EDNRA signaling. GO annotations related to this gene include protein homodimerization activity and protein kinase activity. An important paralog of this gene is CAMK2D. CAMK2D (Calcium/Calmodulin Dependent Protein Kinase II Delta) is a Protein Coding gene. Diseases associated with CAMK2D include Dilated Cardiomyopathy and Cardiomyopathy. Among its related pathways are ICos-ICosL Pathway in T-Helper Cell and Development Endothelin-1/EDNRA signaling. GO annotations related to this gene include protein homodimerization activity and protein kinase activity. An important paralog of this gene is CAMK2B.

## For Research Use Only

A Reliable Research Partner in Life Science and Medicine

Toll-free: 1-888-852-8623

Web: [www.elabscience.com](http://www.elabscience.com)

Tel: 1-832-243-6086

Email: [techsupport@elabscience.com](mailto:techsupport@elabscience.com)

Fax: 1-832-243-6017