

Acetyl-alpha Tubulin (Lys40) Monoclonal Antibody

Catalog No. E-AB-20322

Note: Centrifuge before opening to ensure complete recovery of vial contents.

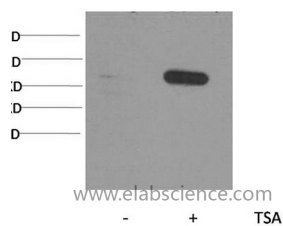
Description

| | |
|---------------------|--|
| Reactivity | Human,Mouse,Rat |
| Immunogen | Synthetic Peptide |
| Host | Mouse |
| Isotype | IgG |
| Clone | Clone:5H5 |
| Purification | Protein A purification |
| Buffer | PBS with 0.02% sodium azide, 0.5% protective protein and 50% glycerol, pH7.4 |

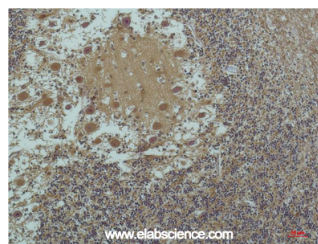
Applications Recommended Dilution

| | |
|------------|-------------|
| WB | 1:1000-2000 |
| IHC | 1:100-200 |

Data



Western Blot analysis of HeLa cells, untreated (-) or treated with Acetyl-alpha Tubulin (Lys40) Monoclonal Antibody
Observed Mw:52kDa



Immunohistochemistry of paraffin-embedded Human brain tissue using Acetyl-alpha Tubulin (Lys40) Monoclonal Antibody at dilution of 1:200.

Preparation & Storage

Storage Store at -20°C. Avoid freeze / thaw cycles.

Background

Tubulin is the major constituent of microtubules. It binds two moles of GTP, one at an exchangeable site on the beta chain and one at a non-exchangeable site on the alpha chain.

For Research Use Only