

Galectin 3 Monoclonal Antibody

Catalog Number:E-AB-22191



Note: Centrifuge before opening to ensure complete recovery of vial contents.

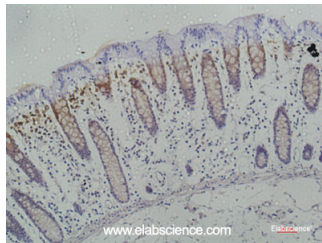
Description

Reactivity	Human
Immunogen	Protein
Host	Mouse
Isotype	IgG
Purification	Protein A purification
Formulation	PBS with 0.02% sodium azide, 0.5% protective protein and 50% glycerol, pH7.4

Applications Recommended Dilution

IHC	1:100-200
------------	-----------

Data



Immunohistochemistry of paraffin-embedded Human colon using Galectin 3 Monoclonal Antibody at dilution of 1:50.

Preparation & Storage

Storage Store at -20°C. Avoid freeze / thaw cycles.

Background

Galactose-specific lectin which binds IgE. May mediate with the alpha-3, beta-1 integrin the stimulation by CSPG4 of endothelial cells migration. Together with DMBT1, required for terminal differentiation of columnar epithelial cells during early embryogenesis.

For Research Use Only

A Reliable Research Partner in Life Science and Medicine

Toll-free: 1-888-852-8623

Web: www.elabscience.com

Tel: 1-832-243-6086

Email: techsupport@elabscience.com

Fax: 1-832-243-6017