

## CASP3 Monoclonal Antibody

**Catalog No.** E-AB-22209

**Note:** Centrifuge before opening to ensure complete recovery of vial contents.

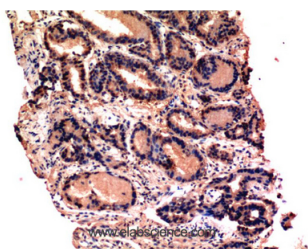
### Description

<b>Reactivity</b>	Human,Mouse,Rat
<b>Immunogen</b>	Synthetic Peptide of Caspase-3
<b>Host</b>	Mouse
<b>Isotype</b>	IgG
<b>Purification</b>	Protein A purification
<b>Buffer</b>	PBS with 0.02% sodium azide, 0.5% protective protein and 50% glycerol, pH7.4

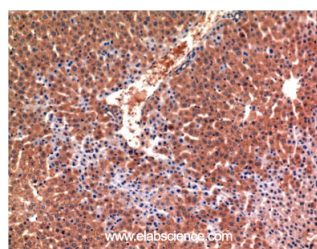
### Applications Recommended Dilution

<b>IHC</b>	1:100-200
------------	-----------

### Data



Immunohistochemistry of paraffin-embedded Human prostate tissue using CASP3 Monoclonal Antibody at dilution of 1:200.



Immunohistochemistry of paraffin-embedded Mouse Liver tissue using CASP3 Monoclonal Antibody at dilution of 1:200.

### Preparation & Storage

**Storage** Store at -20°C. Avoid freeze / thaw cycles.

### Background

Involved in the activation cascade of caspases responsible for apoptosis execution. At the onset of apoptosis it proteolytically cleaves poly(ADP-ribose) polymerase (PARP) at a '216-Asp-Gly-217' bond. Cleaves and activates sterol regulatory element binding proteins (SREBPs) between the basic helix-loop-helix leucine zipper domain and the membrane attachment domain. Cleaves and activates caspase-6, -7 and -9. Involved in the cleavage of huntingtin.

### For Research Use Only