

ACTA1 Monoclonal Antibody

Catalog No. E-AB-22222

Note: Centrifuge before opening to ensure complete recovery of vial contents.

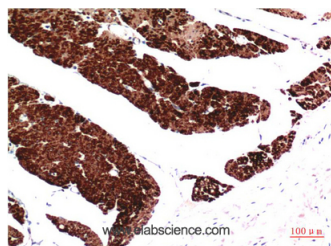
Description

Reactivity	Human, Mouse, Rat
Immunogen	Synthetic Peptide of Muscle actin
Host	Mouse
Isotype	IgG
Clone	Clone: 1E9
Purification	Protein A purification
Conjugation	Unconjugated
Buffer	PBS with 0.02% sodium azide, 0.5% protective protein and 50% glycerol, pH7.4

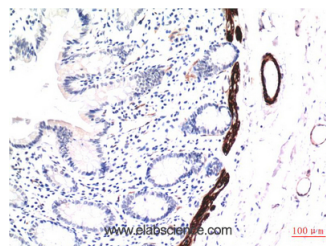
Applications Recommended Dilution

IHC 1:100-200

Data



Immunohistochemistry of paraffin-embedded Human colon carcinoma tissue using ACTA1 Monoclonal Antibody at dilution of 1:200.



Immunohistochemistry of paraffin-embedded Human colon carcinoma tissue using ACTA1 Monoclonal Antibody at dilution of 1:200.

Preparation & Storage

Storage Store at -20°C. Avoid freeze / thaw cycles.

Background

This gene encodes a member of a subfamily of the adenosine deaminase protein family. The encoded protein is one of two adenosine deaminases found in humans, which regulate levels of the signaling molecule, adenosine. The encoded protein is secreted from monocytes undergoing differentiation and may regulate cell proliferation and differentiation. This gene may be responsible for some of the phenotypic features associated with cat eye syndrome. Alternative splicing results in multiple transcript variants. ADA2 (Adenosine Deaminase 2) is a Protein Coding gene. Diseases associated with ADA2 include Sneddon Syndrome and Polyarteritis Nodosa, Childhood-Onset. Among its related pathways are Innate Immune System and Metabolism of proteins.

For Research Use Only