

gamma Tubulin Monoclonal Antibody

Catalog No. E-AB-22223

Note: Centrifuge before opening to ensure complete recovery of vial contents.

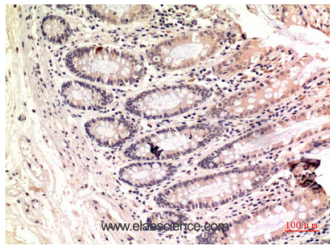
Description

Reactivity	Human
Immunogen	Synthetic Peptide of Gamma Tubulin
Host	Mouse
Isotype	IgG
Clone	Clone:4A4
Purification	Protein A purification
Buffer	PBS with 0.02% sodium azide, 0.5% protective protein and 50% glycerol, pH7.4

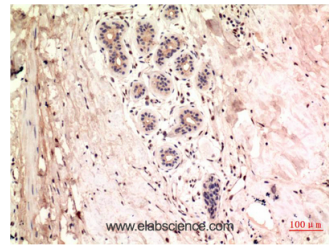
Applications Recommended Dilution

IHC 1:100-200

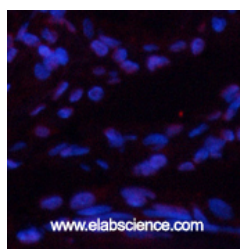
Data



Immunohistochemistry of paraffin-embedded Human colon carcinoma tissue using gamma Tubulin Monoclonal Antibody at dilution of 1:200.



Immunohistochemistry of paraffin-embedded Human breast carcinoma tissue using gamma Tubulin Monoclonal Antibody at dilution of 1:200.



Immunofluorescence analysis of Human lung tissue using gamma Tubulin Monoclonal Antibody at dilution of 1:200.

Preparation & Storage

Storage Store at -20°C. Avoid freeze / thaw cycles.

Background

This gene encodes a member of the tubulin superfamily. The encoded protein localizes to the centrosome where it binds

For Research Use Only

to microtubules as part of a complex referred to as the gamma-tubulin ring complex. The protein mediates microtubule nucleation and is required for microtubule formation and progression of the cell cycle. A pseudogene of this gene is found on chromosome 7. TUBG1 (Tubulin Gamma 1) is a Protein Coding gene. Diseases associated with TUBG1 include Cortical Dysplasia, Complex, With Other Brain Malformations 4 and Reducing Body Myopathy. Among its related pathways are Regulation of PLK1 Activity at G2/M Transition and Sertoli-Sertoli Cell Junction Dynamics. GO annotations related to this gene include GTP binding and structural constituent of cytoskeleton. An important paralog of this gene is TUBG2.