

## Cyclin B1 Monoclonal Antibody

**Catalog No.** E-AB-22228

*Note:* Centrifuge before opening to ensure complete recovery of vial contents.

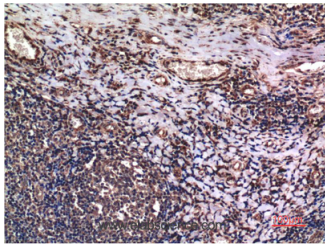
### Description

<b>Reactivity</b>	Human,Mouse,Rat
<b>Immunogen</b>	Synthetic Peptide of Cyclin B1
<b>Host</b>	Mouse
<b>Isotype</b>	IgG
<b>Purification</b>	Protein A purification
<b>Buffer</b>	PBS with 0.02% sodium azide, 0.5% protective protein and 50% glycerol, pH7.4

### Applications Recommended Dilution

<b>IHC</b>	1:100-200
------------	-----------

### Data



Immunohistochemistry of paraffin-embedded Human tonsil tissue using Cyclin B1 Monoclonal Antibody at dilution of 1:200.

### Preparation & Storage

**Storage** Store at -20°C. Avoid freeze / thaw cycles.

### Background

Essential for the control of the cell cycle at the G2/M (mitosis) transition.

### For Research Use Only