

# Luciferase Monoclonal Antibody

Catalog Number:E-AB-22231



**Note:** Centrifuge before opening to ensure complete recovery of vial contents.

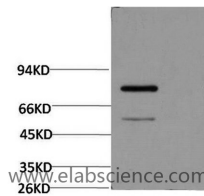
## Description

<b>Reactivity</b>	Firefly
<b>Immunogen</b>	Synthetic Peptide of Luciferase
<b>Host</b>	Mouse
<b>Isotype</b>	IgG
<b>Clone</b>	Clone:2G11
<b>Purification</b>	Protein A purification
<b>Formulation</b>	PBS with 0.02% sodium azide, 0.5% protective protein and 50% glycerol, pH7.4

## Applications Recommended Dilution

<b>WB</b>	1:1000-2000
-----------	-------------

## Data



Western Blot analysis of Firefly Luciferase Transfected Hela using Luciferase Monoclonal Antibody at dilution of 1:2000.  
**Observed Mw:60kDa**

## Preparation & Storage

**Storage** Store at -20°C. Avoid freeze / thaw cycles.

## Background

Luciferase from the firefly has become one of the more widely used reporter proteins for the study of gene expression. Luciferase catalyzes a bioluminescent reaction which requires the substrate luciferin as well as Mg<sup>2+</sup> and ATP. Mixing these reagents with the cell extract containing luciferase, results in a flash of light that decays rapidly. This light can be detected by a luminometer. The total light emission is proportional to the luciferase activity of the sample.

## For Research Use Only

A Reliable Research Partner in Life Science and Medicine

Toll-free: 1-888-852-8623

Web: [www.elabscience.com](http://www.elabscience.com)

Tel: 1-832-243-6086

Email: [techsupport@elabscience.com](mailto:techsupport@elabscience.com)

Fax: 1-832-243-6017