

Luciferase Monoclonal Antibody

Catalog No. E-AB-22232

Note: Centrifuge before opening to ensure complete recovery of vial contents.

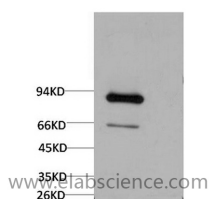
Description

Reactivity	Firefly
Immunogen	Synthetic Peptide of Luciferase
Host	Mouse
Isotype	IgG
Clone	Clone:7C9
Purification	Protein A purification
Buffer	PBS with 0.02% sodium azide, 0.5% protective protein and 50% glycerol, pH7.4

Applications Recommended Dilution

WB 1:1000-2000

Data



Western Blot analysis of Firefly Luciferase Transfected Hela using Luciferase Monoclonal Antibody at dilution of 1:2000.

Observed Mw:60kDa

Preparation & Storage

Storage Store at -20°C. Avoid freeze / thaw cycles.

Background

Luciferase from the firefly has become one of the more widely used reporter proteins for the study of gene expression. Luciferase catalyzes a bioluminescent reaction which requires the substrate luciferin as well as Mg²⁺ and ATP. Mixing these reagents with the cell extract containing luciferase, results in a flash of light that decays rapidly. This light can be detected by a luminometer. The total light emission is proportional to the luciferase activity of the sample.

For Research Use Only