

Phospho-Vimentin (Tyr38) Polyclonal Antibody

Catalog No. E-AB-51042

Note: Centrifuge before opening to ensure complete recovery of vial contents.

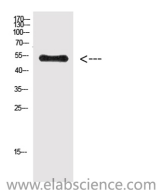
Description

Reactivity	Human,Mouse,Rat
Immunogen	Synthetic peptide from human protein
Host	Rabbit
Isotype	IgG
Purification	Affinity purification
Buffer	PBS with 0.02% sodium azide and 50% glycerol pH 7.4.

Applications Recommended Dilution

WB	1:500-10000
-----------	-------------

Data



Western Blot analysis of HeLa cells using Phospho-Vimentin (Tyr38) Polyclonal Antibody at dilution of 1:500.

Observed Mw:51kDa
Calculated Mw:51kDa

Preparation & Storage

Storage Store at -20°C. Avoid freeze / thaw cycles.

Background

Vimentins are class-III intermediate filaments found in various non-epithelial cells, especially mesenchymal cells. Vimentin is attached to the nucleus, endoplasmic reticulum, and mitochondria, either laterally or terminally.

For Research Use Only