

# Phospho-Vimentin (Tyr38) Polyclonal Antibody

Catalog Number:E-AB-51042



**Note:** Centrifuge before opening to ensure complete recovery of vial contents.

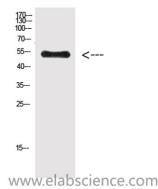
## Description

|                     |  |
|---------------------|--|
| <b>Reactivity</b>   | Human,Mouse,Rat                                      |
| <b>Immunogen</b>    | Synthetic peptide from human protein                 |
| <b>Host</b>         | Rabbit   |
| <b>Isotype</b>      | IgG  |
| <b>Purification</b> | Affinity purification                                |
| <b>Formulation</b>  | PBS with 0.02% sodium azide and 50% glycerol pH 7.4. |

## Applications Recommended Dilution

|              |             |
|--------------|-------------|
| <b>WB</b>    | 1:500-10000 |
| <b>ELISA</b> | 1:10000     |

## Data



Western Blot analysis of HeLa cells using Phospho-Vimentin (Tyr38) Polyclonal Antibody at dilution of 1:500.

**Observed Mw:51kDa**  
**Calculated Mw:51kDa**

## Preparation & Storage

**Storage** Store at -20°C. Avoid freeze / thaw cycles.

## Background

Vimentins are class-III intermediate filaments found in various non-epithelial cells, especially mesenchymal cells. Vimentin is attached to the nucleus, endoplasmic reticulum, and mitochondria, either laterally or terminally.

## For Research Use Only

A Reliable Research Partner in Life Science and Medicine

Toll-free: 1-888-852-8623

Web: [www.elabscience.com](http://www.elabscience.com)

Tel: 1-832-243-6086

Email: [techsupport@elabscience.com](mailto:techsupport@elabscience.com)

Fax: 1-832-243-6017