

## Phospho-EEF2 (Thr56) Polyclonal Antibody

Catalog No. E-AB-51049

**Note:** Centrifuge before opening to ensure complete recovery of vial contents.

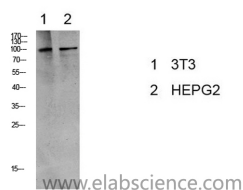
### Description

<b>Reactivity</b>	Human, Mouse, Rat
<b>Immunogen</b>	Synthesized phospho derived from human eEF2 (Phospho-Thr56)
<b>Host</b>	Rabbit
<b>Isotype</b>	IgG
<b>Purification</b>	Affinity purification
<b>Buffer</b>	PBS with 0.02% sodium azide, 0.5% protective protein and 50% glycerol, pH7.4

### Applications Recommended Dilution

**WB** 1:500-2000

### Data



Western Blot analysis of 3T3, HepG2 cells using Phospho-eEF2 (Thr56) Polyclonal Antibody at dilution of 1:1000.

**Observed Mw:100kDa**

### Preparation & Storage

**Storage** Store at -20°C. Avoid freeze / thaw cycles.

### Background

This gene encodes a member of the GTP-binding translation elongation factor family. This protein is an essential factor for protein synthesis. It promotes the GTP-dependent translocation of the nascent protein chain from the A-site to the P-site of the ribosome. This protein is completely inactivated by EF-2 kinase phosphorylation.

### For Research Use Only