

Phospho-DDR1 (Tyr513) Polyclonal Antibody

Catalog Number:E-AB-51058



Note: Centrifuge before opening to ensure complete recovery of vial contents.

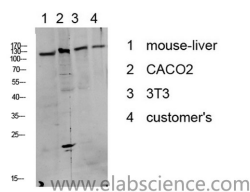
Description

Reactivity	Human,Mouse,Rat
Immunogen	Synthesized phospho derived from human DDR1 (Phospho-Tyr513)
Host	Rabbit
Isotype	IgG
Purification	Affinity purification
Formulation	PBS with 0.02% sodium azide, 0.5% protective protein and 50% glycerol, pH7.4

Applications Recommended Dilution

WB	1:500-2000
ELISA	1:10000-20000

Data



Western Blot analysis of various cells using Phospho-DDR1 (Tyr513) Polyclonal Antibody at dilution of 1:1000.

Observed Mw:130kDa

Preparation & Storage

Storage Store at -20°C. Avoid freeze / thaw cycles.

Background

Receptor tyrosine kinases play a key role in the communication of cells with their microenvironment. These kinases are involved in the regulation of cell growth, differentiation and metabolism. The protein encoded by this gene belongs to a subfamily of tyrosine kinase receptors with homology to Dictyostelium discoideum protein discoidin I in their extracellular domain, and that are activated by various types of collagen. Expression of this protein is restricted to epithelial cells, particularly in the kidney, lung, gastrointestinal tract, and brain. In addition, it has been shown to be significantly overexpressed in several human tumors. Alternatively spliced transcript variants encoding different isoforms have been described for this gene. DDR1 (Discoidin Domain Receptor Tyrosine Kinase 1) is a Protein Coding gene. Diseases associated with DDR1 include Pulmonary Fibrosis, Idiopathic and Breast Cancer. Among its related pathways are GPCR Pathway and Nanog in Mammalian ESC Pluripotency. GO annotations related to this gene include transferase activity, transferring phosphorus-containing groups and protein tyrosine kinase activity. An important paralog of this gene is DDR2.

For Research Use Only

A Reliable Research Partner in Life Science and Medicine

Toll-free: 1-888-852-8623

Web: www.elabscience.com

Tel: 1-832-243-6086

Email: techsupport@elabscience.com

Fax: 1-832-243-6017