

**Note:** Centrifuge before opening to ensure complete recovery of vial contents.

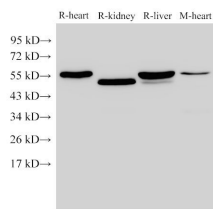
## Description

<b>Reactivity</b>	Human,Mouse,Rat
<b>Immunogen</b>	Recombinant Rat Fibrinogen beta chain protein
<b>Host</b>	Rabbit
<b>Isotype</b>	IgG
<b>Purification</b>	Antigen Affinity Purification
<b>Conjugation</b>	Unconjugated
<b>Formulation</b>	PBS with 0.05% Proclin300, 50% glycerol, pH7.3.

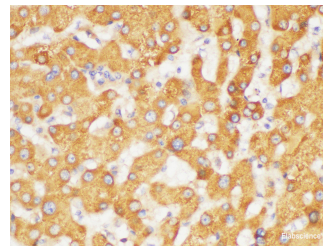
## Applications Recommended Dilution

<b>WB</b>	1:2000-1:4000
<b>IHC</b>	1:100-1:300

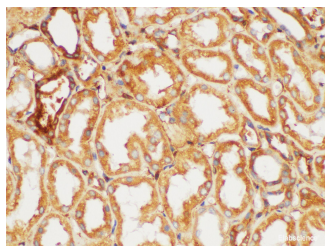
## Data



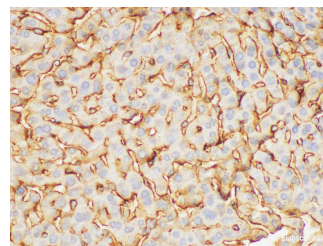
Western Blot analysis of Rat heart, Rat kidney, Rat liver and Mouse heart using FGB Polyclonal Antibody at dilution of 1:4000  
**Observed Mw:55 kDa**  
**Calculated Mw:55 kDa**



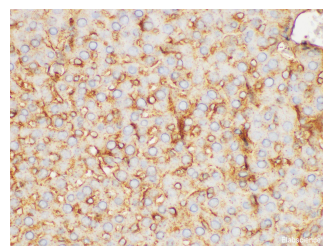
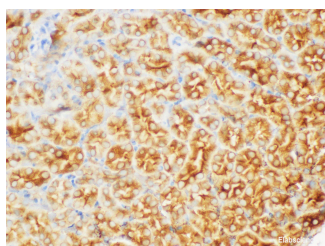
Immunohistochemistry of paraffin-embedded Human liver using FGB Polyclonal Antibody at dilution of 1:200



Immunohistochemistry of paraffin-embedded Human kidney using FGB Polyclonal Antibody at dilution of 1:200



Immunohistochemistry of paraffin-embedded Mouse liver using FGB Polyclonal Antibody at dilution of 1:200



## For Research Use Only

A Reliable Research Partner in Life Science and Medicine

Toll-free: 1-888-852-8623

Web: [www.elabscience.com](http://www.elabscience.com)

Tel: 1-832-243-6086

Email: [techsupport@elabscience.com](mailto:techsupport@elabscience.com)

Fax: 1-832-243-6017

Immunohistochemistry of paraffin-embedded Mouse kidney using FGB Polyclonal Antibody at dilution of 1:200

Immunohistochemistry of paraffin-embedded Rat liver using FGB Polyclonal Antibody at dilution of 1:200

## Preparation & Storage

**Storage** Store at -20°C. Avoid freeze / thaw cycles.

## Background

The protein encoded by this gene is the beta component of fibrinogen, a blood-borne glycoprotein comprised of three pairs of nonidentical polypeptide chains. Following vascular injury, fibrinogen is cleaved by thrombin to form fibrin which is the most abundant component of blood clots. In addition, various cleavage products of fibrinogen and fibrin regulate cell adhesion and spreading, display vasoconstrictor and chemotactic activities, and are mitogens for several cell types. Mutations in this gene lead to several disorders, including afibrinogenemia, dysfibrinogenemia, hypodysfibrinogenemia and thrombotic tendency.

## For Research Use Only

A Reliable Research Partner in Life Science and Medicine

Toll-free: 1-888-852-8623

Web: [www.elabscience.com](http://www.elabscience.com)

Tel: 1-832-243-6086

Email: [techsupport@elabscience.com](mailto:techsupport@elabscience.com)

Fax: 1-832-243-6017