

CD38 Polyclonal Antibody

Catalog Number:E-AB-40434

Note: Centrifuge before opening to ensure complete recovery of vial contents.

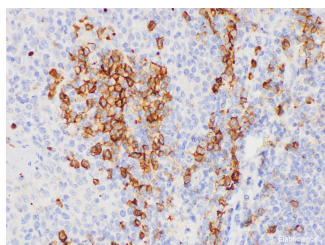
Description

Reactivity	Human
Immunogen	Recombinant Human ADP-ribosyl cyclase/cyclic ADP-ribose hydrolase 1 protein
Host	Rabbit
Isotype	IgG
Purification	Antigen Affinity Purification
Conjugation	Unconjugated
Formulation	PBS with 0.05% Proclin300, 50% glycerol, pH7.3.

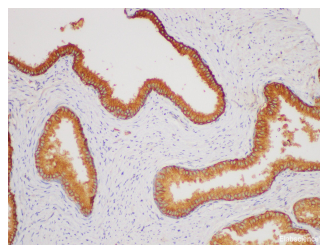
Applications Recommended Dilution

IHC	1:100-1:300
------------	-------------

Data



Immunohistochemistry of paraffin-embedded Human tonsil using CD38 Polyclonal Antibody at dilution of 1:200



Immunohistochemistry of paraffin-embedded Human prostate using CD38 Polyclonal Antibody at dilution of 1:200

Preparation & Storage

Storage	Store at -20°C. Avoid freeze / thaw cycles.
----------------	---

Background

CD38(cluster of differentiation38), also known as cyclic ADP ribose hydrolase is a glycoprotein found on the surface of many immune cells (white blood cells), including CD4+, CD8+, B lymphocytes and natural killer cells. CD38 also functions in cell adhesion, signal transduction and calcium signaling. In humans, the CD38 protein is encoded by the CD38 gene which is located on chromosome 4.

For Research Use Only

A Reliable Research Partner in Life Science and Medicine

Toll-free: 1-888-852-8623

Web: www.elabscience.com

Tel: 1-832-243-6086

Email: techsupport@elabscience.com

Fax: 1-832-243-6017