

SERPINB2 Polyclonal Antibody

Catalog Number:E-AB-40447

Note: Centrifuge before opening to ensure complete recovery of vial contents.

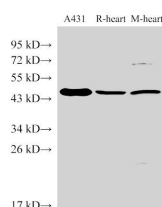
Description

Reactivity	Human,Mouse,Rat
Immunogen	Recombinant Mouse Plasminogen activator inhibitor 2, macrophage protein
Host	Rabbit
Isotype	IgG
Purification	Antigen Affinity Purification
Conjugation	Unconjugated
Formulation	PBS with 0.05% Proclin300, 50% glycerol, pH7.3.

Applications Recommended Dilution

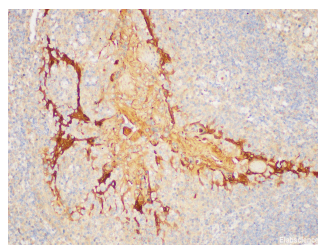
WB	1:500-1:2000
IHC	1:50-1:200

Data

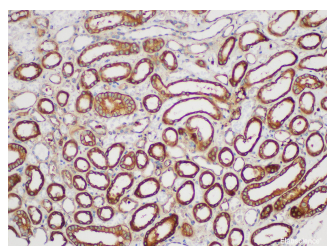


Western Blot analysis of 1)A431, 2)Rat heart, 3)Mouse heart using SERPINB2 Polyclonal Antibody at dilution of 1:1000

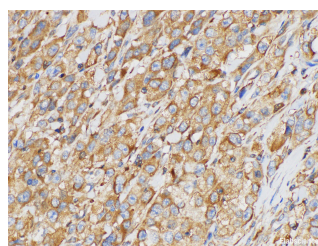
Observed Mw:46 kDa
Calculated Mw:46 kDa



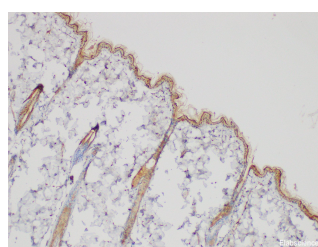
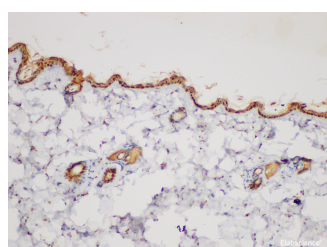
Immunohistochemistry of paraffin-embedded Human tonsil using SERPINB2 Polyclonal Antibody at dilution of 1:200



Immunohistochemistry of paraffin-embedded Human kidney using SERPINB2 Polyclonal Antibody at dilution of 1:200



Immunohistochemistry of paraffin-embedded Human esophageal squamous carcinomas using SERPINB2 Polyclonal Antibody at dilution of 1:200



For Research Use Only

A Reliable Research Partner in Life Science and Medicine

Toll-free: 1-888-852-8623

Web: www.elabscience.com

Tel: 1-832-243-6086

Email: techsupport@elabscience.com

Fax: 1-832-243-6017

SERPINB2 Polyclonal Antibody

Catalog Number:E-AB-40447



Immunohistochemistry of paraffin-embedded Mouse skin using SERPINB2 Polyclonal Antibody at dilution of 1:200

Immunohistochemistry of paraffin-embedded Rat skin using SERPINB2 Polyclonal Antibody at dilution of 1:200

Preparation & Storage

Storage Store at -20°C. Avoid freeze / thaw cycles.

Background

Plasminogen activator inhibitor-2 (placental PAI) is a coagulation factor that inactivates tPA and urokinase. It is present in most cells, especially monocytes/macrophages. PAI-2 exists in two forms, a 60-kDa extracellular glycosylated form and a 43-kDa intracellular form. It is present only at detectable quantities in blood during pregnancy, as it is produced by the placenta, and may explain partially the increased rate of thrombosis during pregnancy.

For Research Use Only

A Reliable Research Partner in Life Science and Medicine

Toll-free: 1-888-852-8623

Web: www.elabscience.com

Tel: 1-832-243-6086

Email: techsupport@elabscience.com

Fax: 1-832-243-6017