

## Bcl-2 Polyclonal Antibody

**Catalog No.** E-AB-60012

**Note:** Centrifuge before opening to ensure complete recovery of vial contents.

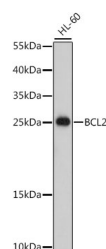
### Description

<b>Reactivity</b>	Human, Mouse, Rat
<b>Immunogen</b>	A synthetic peptide of human Bcl-2
<b>Host</b>	Rabbit
<b>Isotype</b>	IgG
<b>Purification</b>	Affinity purification
<b>Conjugation</b>	Unconjugated
<b>Buffer</b>	PBS with 0.02% sodium azide, 50% glycerol, pH7.3.

### Applications Recommended Dilution

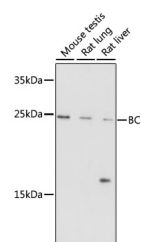
<b>WB</b>	1:500-1:2000
<b>IHC</b>	1:50-1:100
<b>IF</b>	1:50-1:100

### Data

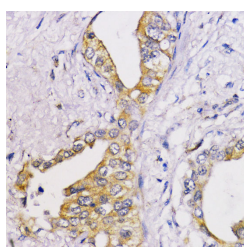


Western blot analysis of extracts of HL-60 cells using Bcl-2 Polyclonal Antibody at dilution of 1:500.

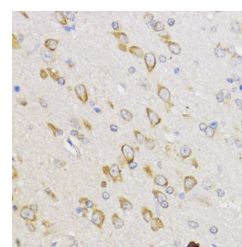
**Observed Mw:24kDa/26kDa**  
**Calculated Mw:22kDa/26kDa**



Western blot analysis of extracts of various cells using Bcl-2 Polyclonal Antibody at dilution of 1:1000.

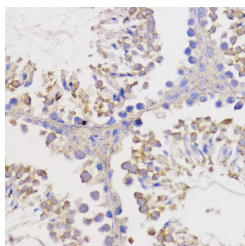


Immunohistochemistry of paraffin-embedded Human lung cancer using Bcl-2 Polyclonal Antibody at dilution of 1:100 (40x lens).

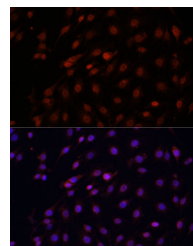


Immunohistochemistry of paraffin-embedded Rat brain using Bcl-2 Polyclonal Antibody at dilution of 1:100 (40x lens).

### For Research Use Only



Immunohistochemistry of paraffin-embedded Mouse testis using Bcl-2 Polyclonal Antibody at dilution of 1:100 (40x lens).



Immunofluorescence analysis of C6 cells using Bcl-2 Polyclonal Antibody at dilution of 1:100 (40x lens).  
Blue: DAPI for nuclear staining.

## Preparation & Storage

**Storage** Store at -20°C. Avoid freeze / thaw cycles.

## Background

This gene encodes an integral outer mitochondrial membrane protein that blocks the apoptotic death of some cells such as lymphocytes. Constitutive expression of BCL2, such as in the case of translocation of BCL2 to Ig heavy chain locus, is thought to be the cause of follicular lymphoma. Alternative splicing results in multiple transcript variants.