

Cytochrome c Polyclonal Antibody

Catalog No. E-AB-60022

Note: Centrifuge before opening to ensure complete recovery of vial contents.

Description

Reactivity	Human,Mouse,Rat
Immunogen	Recombinant fusion protein of human Cytochrome c (NP_061820.1).
Host	Rabbit
Isotype	IgG
Purification	Affinity purification
Conjugation	Unconjugated
Buffer	PBS with 0.02% sodium azide, 50% glycerol, pH7.3.

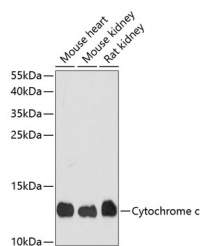
Applications

Recommended Dilution

WB 1:500-1:2000 IF

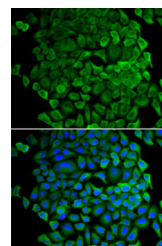
1:50-1:200

Data



Western blot analysis of extracts of various cell lines using Cytochrome c Polyclonal Antibody at dilution of 1:1000.

Observed Mw:12kDa
Calculated Mw:11kDa



Immunofluorescence analysis of A-549 cells using Cytochrome c Polyclonal Antibody

Preparation & Storage

Storage Store at -20°C. Avoid freeze / thaw cycles.

Background

This gene encodes a small heme protein that functions as a central component of the electron transport chain in mitochondria. The encoded protein associates with the inner membrane of the mitochondrion where it accepts electrons from cytochrome b and transfers them to the cytochrome oxidase complex. This protein is also involved in initiation of apoptosis. Mutations in this gene are associated with autosomal dominant nonsyndromic thrombocytopenia. Numerous processed pseudogenes of this gene are found throughout the human genome.

For Research Use Only