

## RYR2 Polyclonal Antibody

Catalog No. E-AB-64002

*Note:* Centrifuge before opening to ensure complete recovery of vial contents.

### Description

<b>Reactivity</b>	Human,Mouse,Rat
<b>Immunogen</b>	A synthetic peptide of human RYR2 (NP_001026.2).
<b>Host</b>	Rabbit
<b>Isotype</b>	IgG
<b>Purification</b>	Affinity purification
<b>Conjugation</b>	Unconjugated
<b>Buffer</b>	PBS with 0.02% sodium azide, 50% glycerol, pH7.3.

### Applications

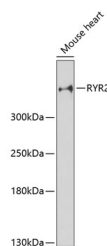
### Recommended Dilution

WB 1:500-1:2000 IHC

1:50-1:200 IF

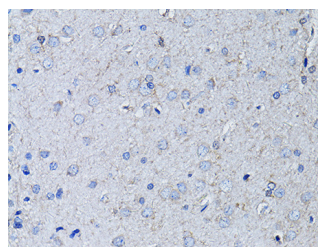
1:50-1:200

### Data

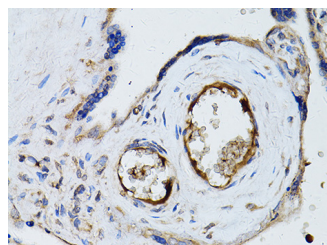


Western blot analysis of extracts of Mouse heart using RYR2 Polyclonal Antibody at dilution of 1:3000.

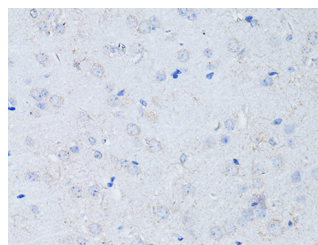
**Observed Mw:565kDa**  
**Calculated Mw:564kDa/565kDa**



Immunohistochemistry of paraffin-embedded Rat brain using RYR2 Polyclonal Antibody at dilution of 1:100 (40x lens).

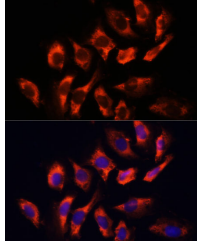


Immunohistochemistry of paraffin-embedded Human placenta using RYR2 Polyclonal Antibody at dilution of 1:100 (40x lens).



Immunohistochemistry of paraffin-embedded Mouse brain using RYR2 Polyclonal Antibody at dilution of 1:100 (40x lens).

### For Research Use Only



Immunofluorescence analysis of U-2 OS cells using RYR2 Polyclonal Antibody at dilution of 1:100 (40x lens). Blue: DAPI for nuclear staining.

## Preparation & Storage

**Storage** Store at -20°C. Avoid freeze / thaw cycles.

## Background

This gene encodes a ryanodine receptor found in cardiac muscle sarcoplasmic reticulum. The encoded protein is one of the components of a calcium channel, composed of a tetramer of the ryanodine receptor proteins and a tetramer of FK506 binding protein 1B proteins, that supplies calcium to cardiac muscle. Mutations in this gene are associated with stress-induced polymorphic ventricular tachycardia and arrhythmogenic right ventricular dysplasia.

## For Research Use Only